

DELHI TRANSCO LTD.

STATE LOAD DISPATCH CENTER

PROGRESS REPORT

JUNE 2014

S. No.	CONTENTS	Page No.
1.	Salient Features of Delhi Power System	3
2.	Performance of Generating Stations within Delhi	4
3.	Details of Outage of Generating Stations within Delhi	5-12
4.	Allocation of Power to Delhi from unallocated quota of central sector	13
5.	Allocation of Power to Discoms	14
6.	Power Availability Demand Position of Delhi at the time of occurrence of Peak Demand	15
7.	Power Availability Demand Position of Delhi at the time of occurrence of Maximum Un-Restricted Demand	16
8.	Source wise scheduled drawl from grid and Availability within Delhi	17-19
9.	Shedding Details	20-24
10.	Load Curve for the Day of Peak Demand	25
11.	Load Curve for the day of occurrence of Maximum Un-Restricted Demand	26
12.	Load Curve for the day of Maximum Energy Consumed	27
13.	Load Curve for the day of Maximum Un-Restricted Energy Demand	28
14.	Load Duration Curve	29
15.	Frequency Analysis	30
16.	Voltage Profile for significant 220kV Sub-Stations	31
17.	Voltage Profile for significant 400kV Sub-Stations	32-33
18.	Details of Capacitors Installations in Delhi	34-39
19.	Tripping Details of 400/220 KV System in Delhi Power System	40-44
20.	Details of Under frequency Relay operations in Delhi Power System	45

SALIENT FEATURES OF DELHI POWER SYSTEM

Sr. No.	Features	JUNE 2013	JUNE 2014
1	Effective Generation Capacity within Delhi in MW		
	Rajghat Power House	135	135
	Gas Turbine	270	270
	Pragati Power Corporation Ltd.	330	330
	Badapur Thermal Power Station	705	705
	Rithala GT	108	108
	Bawana	685	1372
	TOWMCL	16	16
	Total	2249	2936
2	Maximum Unrestricted Demand (MW)	5714	5736
	Date	06.06.2013	20.06.2014
	Time	15.38.41	15.30.00
3	Peak Demand met (MW)	5653	5533
	Date	06.06.2013	19.06.2014
	Time	15.38.41	14.46.07
4	Peak Availability (MW)	5359	5573
5	Shortage (-) / Surplus (+) in MW	(-)355	(+) 40
6	Percentage Shortage (-) / Surplus (+)	(-) 6.28	(-) 0.72
7	Maximum Energy Consume in a day (Mus)	104.187	116.735
8	Energy Consumed during the month	2762.186	3198.737
9	Load Shedding in Mus		
A)	Due to Grid Restrictions		
i)	Under Frequency Relay Operations	0.020	0.006
ii)	Manual Load shedding from DTL S/Stns.	0.000	0.000
iii)	Load Shedding due to low frequency / Low Voltage / TTC/ATC Violation /New grid code regulation deviation		
	NDPL	0.363	0.200
	BRPL	0.692	3.019
	BYPL	0.133	0.424
	NDMC	0.000	0.000
	MES	0.000	0.000
iv)	Due to transmission Constraints in Central Sector	1.905	1.202
	Total due to Grid Restriction	3.113	4.851
B)	Due to Constraints in System in Mus		
	DTL	4.210	18.617
	NDPL	0.667	0.505
	BRPL	5.340	3.922
	BYPL	0.873	1.523
	NDMC	0.008	0.000
	MES	0.000	0.000
	Other Agencies	1.086	8.577
	Total	12.184	33.144
11	Grand Total in Mus	15.297	37.995

2. PERFORMANCE OF GENERATING STATIONS WITHIN DELHI DURING JUNE 2014

A) For the month of June 2014

All Figures in MUs

S. No	Stations	Gross Generation	Aux. Consumption	Net Generation	Availability (%)	Backing Down
1.	RPH	74.942	9.795	65.147	76.39	1.457
2.	GT	98.450	3.740	94.710	55.00	9.611
3.	PPCL	140.174	4.097	136.077	60.84	4.378
4.	BTPS	432.661	47.572	385.089	90.10	4.378
5.	Rithala	0.000	0.060	-0.060	89.17	25.748
6.	Bawana	163.713	6.747	156.966	99.34	732.701
7.	Towmcl	13.077	1.845	11.232	--	--
	TOTAL	923.017	73.856	849.161	--	778.273

B) For the Year 2013-14 (Upto June 2014)

Power Station	Effective Capacity (MW)	Net Generation in MUs for Jun 2014	Availability (%) for Jun 2014	PLF (%) for Jun 2014	Cumulative Generation in MUs upto Jun 2014 for the year 2014-15	Cumulative Availability in % upto Jun 2014 for the year 2014-15	Cumulative PLF in % upto Jun 2014 for the year 2014-15
RPH	135	65.147	76.39	74.70	152.784	76.82	58.29
GT	270	94.710	55.00	49.91	257.276	55.67	44.74
PPCL	330	136.077	60.84	58.94	328.735	48.86	47.06
BTPS	705	385.089	90.10	84.50	953.462	86.64	68.74
Rithala	108	-0.060	89.17	0.00	-0.172	89.17	0.00
Bawana	902	156.966	99.34	17.38	204.317	101.50	7.46
Towmcl	16	11.232	--	113.52	33.796	--	--
TOTAL	2466	849.161	--	--	1930.198	--	--

3
(A)

DETAILS OF OUTAGES OF GENERATING STNS. WITHIN DELHI W.E.F. APRIL 2014
RPH STATION

Unit No	Capacity in MW	Outage		Synchronization		Reason of Outage
		Date	Time	Date	Time	
1	67.5	04.11.13	12.00	16.04.14	10.50	Stopped due to low demand and high frequency
		04.05.14	10.35	07.05.14	03.10	Boiler tube leakage
		07.05.14	15.35	07.05.14	16.20	Loss of fuel
		07.05.14	16.40	07.05.14	19.25	Loss of fuel
		10.05.14	22.30	10.05.14	23.20	Flame failure
		13.05.14	10.45	14.05.14	15.10	Stopped due to low demand and high frequency
		14.05.14	15.40	14.05.14	16.25	Drum level low
		14.05.14	17.30	14.05.14	17.55	Excitation failure
		22.05.14	09.20	22.05.14	10.45	Turbine trip
		22.05.14	22.25	23.05.14	00.50	Flame failure
		23.05.14	22.30	24.05.14	00.00	Turbine trip
		24.05.14	00.50	24.05.14	01.20	Furnance pressure very high
		30.05.14	16.55	31.05.14	00.00	Unit tripped due to grid disturbance
		31.05.14	00.15	31.05.14	02.30	Drum level low
		09.06.14	13.15	09.06.14	19.25	Unit tripped due to 220kV supply fail
		21.06.14	18.00	21.06.14	20.05	Unit tripped due to 220kV supply fail
23.06.14	01.40	23.06.14	04.05	Unit tripped due to 220kV supply fail		
25.06.14	05.00	25.06.14	09.25	Unit tripped due to 220kV supply fail		

Unit No	Capacity in MW	Outage		Synchronization		Reason of Outage
		Date	Time	Date	Time	
2	67.5	15.03.14	18.00	16.04.14	04.40	Stopped due to low demand and high frequency
		27.04.14	19.30	05.05.14	01.25	Desynchronized on ETD due to fire hazard at boiler corder no. 4
		14.05.14	18.45	17.05.14	17.50	Stopped due to low demand and high frequency
		30.05.14	16.55	30.05.14	23.30	Unit tripped due to grid disturbance
		04.06.14	00.20	05.06.14	00.45	Boiler tube leakage
		07.06.14	11.00	07.06.14	12.05	Turbine trip
		09.06.14	13.15	09.06.14	15.50	Unit tripped due to 220kV supply fail
		21.06.14	18.00	21.06.14	22.50	Unit tripped due to 220kV supply fail
		23.06.14	01.40	23.06.14	08.30	Unit tripped due to 220kV supply fail
		25.06.14	05.05	25.06.14	07.50	Unit tripped due to 220kV supply fail

(B)

Gas Turbine

Unit No	Capacity in MW	Outage		Synchronization		Reason of Outage
		Date	Time	Date	Time	
1	30	27.03.14	13.10	15.04.14	18.28	Stopped due to low demand and high frequency
		15.04.14	18.38	15.04.14	19.45	Machine tripped due to grid disturbance
		14.06.14	02.02	16.04.14	08.01	Stopped due to low demand and high frequency
		16.04.14	18.15	23.04.14	19.45	
		04.05.14	10.05	04.05.14	13.45	Stopped due to LTTH High
		25.05.14	03.31	26.05.14	18.02	Stopped due to low demand and high frequency
		27.05.14	12.16	28.05.14	20.11	
		30.05.14	16.55	30.05.14	17.30	Machine came on FSNL due to grid disturbance.
		02.06.14	03.27	02.06.14	05.55	Due to tripping of 20 MVA Tr. Machine tripped
		03.06.14	19.02	03.06.14	20.21	Due to tripping of 6.6 KV Bus Coupler machine came on FSNL
		09.06.14	13.12	09.06.14	13.42	Machine came on FSNL as the 220 KV Bus became dead at IP Ext end.
		13.06.14	23.10	14.06.14	01.45	Tripped on loss of excitation
		14.06.14	01.45	16.06.14	12.49	Stopped due to low demand and high frequency
		18.06.14	09.10	18.06.14	11.20	Tripped on loss of excitation
		21.06.14	17.56	21.06.14	18.48	Due to Heavy Jerk (Due to 220 KV Pragati-Sarita Vihar line tripped)
		25.06.14	05.00	25.06.14	06.10	Machine tripped due to failure of Grid
		25.06.14	14.55	25.06.14	15.10	Due to Jerk both 160 MVA Tx. Tripped
		30.06.14	05.02	30.06.14	06.05	machine tripped due to failure of auxiliary Supply
30.06.14	13.32	30.06.14	17.06	Stopped as per SLDC as generation not required in OC mode		

Unit No	Capacity in MW	Outage		Synchronization		Reason of Outage
		Date	Time	Date	Time	
2	30	01.02.14	17.00	30.06.14	23.59	Machine stopped due to high vibration

Unit No	Capacity in MW	Outage		Synchronization		Reason of Outage
		Date	Time	Date	Time	
3	30	27.03.14	16.38	15.04.14	17.50	Stopped due to low demand and high frequency
		15.04.14	18.38	15.04.14	19.05	Machine tripped due to grid disturbance
		18.04.14	17.47	18.04.14	18.55	Tripped on electrical trouble normal shutdown
		06.05.14	11.00	06.05.14	15.05	Stopped due to LTTH High
		06.05.14	15.15	06.05.14	17.30	
		07.05.14	10.46	07.05.14	19.31	
		12.05.14	17.21	12.05.14	18.05	Tripped on loss of flame
		13.05.14	00.22	13.05.14	00.54	Stopped due to low demand and high frequency
		13.05.14	20.25	22.05.14	12.10	
		25.05.14	00.58	25.05.14	01.26	Due to trid disturbance machine came on FSNL
		30.05.14	16.55	30.05.14	17.25	Machine tripped due to Middle section of Base radiator punctured due to falling of angle from APRDS Floor
		04.06.14	14.47	04.06.14	16.10	
		09.06.14	13.12	09.06.14	13.36	
		20.06.14	21.02	30.06.14	12.50	Machine started but could not be taken on load due to failure of diesel Engine

Unit No	Capacity in MW	Outage		Synchronization		Reason of Outage
		Date	Time	Date	Time	
4	30	27.03.14	18.30	06.06.14	12.30	Machine is under shutdown for HGPI
		09.06.14	13.12	09.06.14	13.34	Machine came on FSNL as the 220 KV Bus became dea at IP Ext end.
		21.06.14	17.56	21.06.14	19.05	Came on FSNL due to tripping of 160 MVA Tr-1& II.
		25.06.14	05.01	25.06.14	06.45	Came on FSNL due to tripping of 160 MVA Tr-1& II.
		25.06.14	08.45	25.06.14	17.26	Machine could not be taken on load due Diode Rotating diode fault fault on protection panel.
		30.06.14	05.30	30.06.14	06.10	machine tripped due to failure of auxiliary Supply

Unit No	Capacity in MW	Outage		Synchronization		Reason of Outage
		Date	Time	Date	Time	
5	30	12.04.14	09.50	12.04.14	10.41	Machine tripped due to grid disturbance
		15.04.14	18.38	15.04.14	18.48	
		07.05.14	13.30	13.05.14	18.50	Machine tripped due to LTTH High . After that it is not available due to problem in Diesel engine.
		25.05.14	00.58	25.05.14	01.30	Due to trid disturbance machine came on FSNL
		30.05.14	16.55	30.05.14	19.15	
		06.06.14	02.35	06.06.14	11.30	Stopped due to low demand and high frequency
		06.06.14	11.30	06.06.14	17.15	Machine tripped on high Exhaust temperature.
		09.06.14	13.12	09.06.14	13.20	Machine came on FSNL as the 220 KV Bus became dea at IP Ext end.
		20.06.14	10.50	20.06.14	10.56	machine came on FSNL due to tripping of 7.5 MVA Auxiliary Transformer due to jerk.
		21.06.14	17.56	21.06.14	18.31	Machine came on FSNL as the 220 KV Bus became dea at IP Ext end.
		25.06.14	05.01	25.06.14	08.45	Machine came on FSNL as the 220 KV Bus became dea at IP Ext end.
		25.06.14	08.45	25.06.14	11.02	machine could not be taken on load due to starting device trip.
		25.06.14	14.45	25.06.14	18.09	Machine tripped as the 220 KV Bus became dea at IP Ext end.
		26.06.14	02.46	26.06.14	15.13	Stopped due to low demand and high frequency
29.06.14	00.05	30.06.14	17.10			

Unit No	Capacity in MW	Outage		Synchronization		Reason of Outage
		Date	Time	Date	Time	
6	30	12.04.14	09.50	12.04.14	09.55	Machine tripped due to grid disturbance
		15.04.14	18.38	15.04.14	18.50	
		30.05.14	16.55	30.05.14	17.23	Due to trid disturbance machine came on FSNL
		02.06.14	03.27	02.06.14	04.10	Due to tripping of 20 MVA Tr. Machine came on FSNL
		03.06.14	19.02	03.06.14	20.07	Due to tripping of 6.6 Bus Coupler machine came on FSNL
		06.06.14	02.32	06.06.14	11.30	Stopped due to low demand and high frequency
		06.06.14	11.30	06.06.14	18.00	machine not taken on load due to problem in Diesel Engine
		06.06.14	18.00	11.06.14	11.45	Stopped due to low demand and high frequency
		21.06.14	17.56	21.06.14	18.42	Machine came on FSNL as the 220 KV Bus became dea at IP Ext end.
		25.06.14	05.01	25.06.14	05.28	Machine came on FSNL as the 220 KV Bus became dea at IP Ext end.
		25.06.14	14.45	25.06.14	15.10	Came on FSNL due to tripping of 160 MVA Tr-1& II.
		26.06.14	02.47	26.06.14	18.02	Stopped due to low demand and high frequency
		29.06.14	00.02	30.06.14	17.41	

Unit No	Capacity in MW	Outage		Synchronization		Reason of Outage
		Date	Time	Date	Time	
STG-1	30	27.03.14	13.20	15.04.14	23.36	Stopped due to low demand and high frequency
		15.04.14	23.39	16.04.14	00.38	Gen. class A trip
		16.04.14	00.52	16.04.14	12.20	
		16.04.14	16.20	16.04.14	22.00	Turbine shaft vibration very high
		16.04.14	22.00	23.04.14	22.54	Stopped due to low demand and high frequency
		24.04.14	02.30	24.04.14	04.02	Turbine shaft vibration very high at bearing no 3
		24.04.14	05.30	24.04.14	11.35	
		26.04.14	14.40	26.04.14	15.22	
		01.05.14	20.40	02.05.14	05.45	Machine manually tripped due to heavy abnormal sound in CEP
		04.05.14	10.10	04.05.14	15.30	G.T. stopped due to LTTH High, so STG stopped
		06.05.14	17.20	06.05.14	21.30	Machine tripped due to Oil pressure problem
		12.05.14	22.18	12.05.14	23.10	Tripped on Trip oil pressure very low
		14.05.14	12.05	14.05.14	14.58	Tripped on Class A relay and 40G relay operated
		25.05.14	00.58	25.05.14	03.30	Tripped due to grid disturbance
		25.05.14	03.30	25.05.14	21.30	machine under shutdown due to truning gear problem
		25.05.14	21.30	26.05.14	21.05	Stopped due to low demand and high frequency
		27.05.14	08.46	27.05.14	17.30	Machine tripped due to low vacuum
		27.05.14	17.30	28.05.14	23.52	Stopped due to low demand and high frequency
		29.05.14	09.20	29.05.14	10.07	Tripped on trip oil pressure very low
		29.05.14	12.38	29.05.14	14.04	
		30.05.14	16.55	30.05.14	19.05	Tripped due to grid disturbance
		02.06.14	03.27	02.06.14	07.03	Due to tripping of 20 MVA Tr. Machine tripped
		03.06.14	19.02	03.06.14	22.07	Due to tripping of 6.6 Bus Coupler machine tripped
		09.06.14	13.12	09.06.14	14.40	Machine came on FSNL as the 220 KV Bus became dead at IP Ext end.
		13.06.14	23.10	14.06.14	02.15	Machine tripped due to tripping of GT#1 on loss of Excitation.
		14.06.14	02.15	16.06.14	15.18	Stopped due to low demand and high frequency
		18.06.14	09.10	18.06.14	12.50	Machine tripped due to tripping of GT#1 on loss of Excitation.
		20.06.14	10.50	20.06.14	17.20	machine tripped due to tripping of 7.5 MVA Auxiliary Transformer due to jerk.
		21.06.14	17.56	21.06.14	20.28	Due to Heavy Jerk,GT and STG tripped (Due to 220 KV Pragati-Sarita Vihar line tripped)
		25.06.14	05.01	25.06.14	07.40	Due to Jerk machine tripped
25.06.14	14.45	25.06.14	16.13	Due to Jerk both 160 MVA Tx. Tripped		
30.06.14	05.02	30.06.14	23.56	Machine tripped due to tripping of Auxiliary Transformer.		

Unit No	Capacity in MW	Outage		Synchronization		Reason of Outage
		Date	Time	Date	Time	
STG-2	30	27.03.14	16.45	16.04.14	01.50	Stopped due to low demand and high frequency
		18.04.14	17.47	18.04.14	20.40	Machine tripped due to tripping of G.T.
		06.05.14	11.05	06.05.14	23.59	G.T. stopped due to LTTH high, so STG stopped
		07.05.14	10.46	07.05.14	23.10	
		12.05.14	17.22	12.05.14	19.05	Tripped due to tripping of G.T. (machine running on single G.T.)
		13.05.14	00.22	13.05.14	01.40	
		13.05.14	20.25	22.05.14	15.50	Stopped due to low demand and high frequency
		25.05.14	00.58	25.05.14	02.05	Tripped due to grid disturbance
		30.05.14	00.01	30.05.14	23.56	Machine not available due to non availability of DC EOP
		02.06.14	03.27	02.06.14	06.12	Due to tripping of 20 MVA Tr. Machine tripped
		04.06.14	10.20	04.06.14	10.38	Machine tripped due to malfunction of MS-14 valve
		04.06.14	14.47	04.06.14	16.48	STG tripped due to tripping of GT#3 .
		09.06.14	13.12	09.06.14	14.25	Machine tripped due to Grid disturbance
		17.06.14	18.43	17.06.14	19.28	Machine tripped on low vacuum as drum pr could not be maintained due to tripping of BFP-2A.
		20.06.14	10.50	20.06.14	11.50	Machine tripped due to tripping of Auxilairy Transformer.
		21.06.14	17.56	21.06.14	20.35	Due to Heavy Jerk,GT and STG tripped (Due to 220 KV Pragati-Sarita Vihar line tripped)
		22.06.14	02.00	22.06.14	03.09	Machine tripped on Turbine RJB shaft vibration very high.
		25.06.14	05.01	25.06.14	08.45	Machine tripped due to failure of Grid
		25.06.14	08.45	25.06.14	19.28	machine could not be taken as both GT 3 & 4 were not available
		30.06.14	05.30	30.06.14	07.06	Machine tripped due to tripping of Auxilairy Transformer.

Unit No	Capacity in MW	Outage		Synchronization		Reason of Outage
		Date	Time	Date	Time	
STG-3	30	12.04.14	09.50	12.04.14	11.34	Machine tripped due to grid disturbance
		15.04.14	18.38	15.04.14	21.15	
		10.05.14	17.45	10.05.14	19.08	Machine tripped due to card malfunction
		25.05.14	00.58	25.05.14	02.15	Machine tripped due to grid disturbance
		30.05.14	16.55	30.05.14	18.25	
		02.06.14	03.27	02.06.14	05.07	Due to tripping of 20 MVA Tr. Machine tripped
		03.06.14	09.12	11.06.14	10.59	Machine stopped due to Fire at Bearing No.#1
		21.06.14	17.56	21.06.14	21.30	Due to Heavy Jerk,GT and STG tripped (Due to 220 KV Pragati-Sarita Vihar line tripped)
		25.06.14	05.01	25.06.14	08.05	Machine tripped due to failure of Grid
		25.06.14	14.05	25.06.14	22.27	Machine tripped manually due to fire observed at bearing #1.
		26.06.14	01.51	26.06.14	21.43	Machine tripped manually due to fire observed at bearing #1.
		27.06.14	02.50	27.06.14	11.45	Machine tripped manually due to fire observed at bearing #1.
		27.06.14	12.56	28.06.14	12.00	Machine tripped manually due to fire observed at bearing #1.
		28.06.14	13.10	30.06.14	23.59	Machine not available due to leakage of oil from bearing#1

(C) PRAGATI

Unit No	Capacity in MW	Outage		Synchronization		Reason of Outage
		Date	Time	Date	Time	
1	104	24.04.14	17.21	24.04.14	21.14	Tripped On internal fault
		24.04.14	21.35	24.04.14	23.26	Tripped on internal fault
		28.04.14	00.00	28.04.14	10.00	Stopped due to less demand and high frequency
		28.04.14	10.00	18.06.14	15.06	Stopped for MI
		21.06.14	11.11	22.06.14	22.11	To attend leakage after planned shutdown of MI
		25.06.14	05.01	25.06.14	06.00	Tripped due to grid disturbance

Unit No	Capacity in MW	Outage		Synchronization		Reason of Outage
		Date	Time	Date	Time	
2	104	08.04.14	08.58	27.04.14	22.31	Stopped for CI
		02.05.14	15.29	02.05.14	16.59	Tripped on internal fault
		04.05.14	15.37	04.05.14	16.39	
		25.05.14	00.58	25.05.14	02.50	Tripped due to grid disturbance
		14.06.14	13.35	14.06.14	14.06	Tripped on internal fault

Unit No	Capacity in MW	Outage		Synchronization		Reason of Outage
		Date	Time	Date	Time	
STG	122	11.04.14	11.04	11.04.14	11.57	STG tripped on internal fault
		16.04.14	00.00	19.05.14	02.43	STG stopped for bearing inspection and condenser chemical cleaning.
		25.05.14	00.58	25.05.14	03.53	Tripped due to grid disturbance
		27.05.14	10.00	27.05.14	11.18	Tripped on internal fault
		30.05.14	16.56	30.05.14	18.12	Tripped due to grid disturbance
		09.06.14	13.12	09.06.14	13.57	
		13.06.14	02.36	13.06.14	03.41	
		16.06.14	11.41	16.06.14	12.23	Tripped on internal fault
		21.06.14	17.55	21.06.14	18.40	Tripped due to grid disturbance
		25.06.14	05.01	25.06.14	06.58	

(D) BADARPUR THERMAL POWER STATION

Unit	Capacity in MW	Outage		Synchronization		Reason of Outage
		Date	Time	Date	Time	
1	95	14.05.14	17.37	19.05.14	09.36	Stopped due to low demand and high frequency
		30.05.14	17.08	30.05.14	19.17	Tripped due to grid disturbance
		20.06.14	12.15	21.05.14	06.25	Water wall leakage

Unit	Capacity in MW	Outage		Synchronization		Reason of Outage
		Date	Time	Date	Time	
2	95	25.04.14	12.17	30.04.14	21.27	Stopped due to low demand and high frequency
		03.05.14	17.41	03.05.14	18.58	Tripped due to grid disturbance
		04.05.14	20.51	05.05.14	00.16	AVR & Excitation system
		22.05.14	09.27	31.05.14	12.13	CW Pum pit cleaning

Unit	Capacity in MW	Outage		Synchronization		Reason of Outage
		Date	Time	Date	Time	
3	95	11.03.14	21.15	01.05.14	13.55	Stopped due to low demand and high frequency
		03.05.14	17.41	03.05.14	19.43	Tripped due to grid disturbance
		10.05.14	15.55	11.05.14	17.22	Water wall leakage (Screentube LHS)
		30.05.14	17.08	30.05.14	20.05	Tripped due to grid disturbance
		30.05.14	21.22	30.05.14	22.41	AVR & Excitation system problem
		30.05.14	23.53	30.05.14	23.59	
		14.06.14	15.18	14.06.14	19.44	Generator Protection
		21.06.14	14.14	22.06.14	14.34	Water wall leakage
26.06.14	20.20	28.06.14	01.18	Economizer tube leakage		

Unit	Capacity in MW	Outage		Synchronization		Reason of Outage
		Date	Time	Date	Time	
4	210	05.03.14	02.11	21.04.14	15.16	Planned shutdown
		30.04.14	14.18	01.05.14	21.00	Economizer Tube leakage
		01.05.14	21.00	05.05.14	11.13	Tripped due to grid disturbance
		25.05.14	20.26	28.05.14	07.55	Reheater tube leakage
		30.05.14	17.08	30.05.14	22.08	Tripped due to grid disturbance

Unit	Capacity in MW	Outage		Synchronization		Reason of Outage
		Date	Time	Date	Time	
5	210	23.04.14	00.02	25.04.14	05.05	APH outlet Baffles found broken
		12.05.14	04.02	14.05.14	08.27	APH Outlet deflectors broken
		07.06.14	22.47	08.06.14	23.22	CW Pump trip
		13.06.14	11.01	13.06.14	15.51	AVR & Excitation system problem
		17.06.14	23.06	19.06.14	04.00	Economizer tube leakage
		19.06.14	04.00	20.06.14	16.45	PA Fan lub oil system problem

(E) **BAWANA CCGT POWER STATION**

Unit	Capacity in MW	Outage		Synchronization		Reason of Outage
		Date	Time	Date	Time	
1	216	25.09.13	12.05	10.06.14	18.34	Stopped due to low demand and high frequency
		13.06.14	09.20	16.06.14	16.48	
		21.06.14	01.25	23.06.14	08.34	
		28.06.14	06.42	30.06.14	23.59	

Unit	Capacity in MW	Outage		Synchronization		Reason of Outage
		Date	Time	Date	Time	
2	216	11.10.13	10.40	29.04.14	16.10	Stopped due to low demand and high frequency
		29.04.14	16.37	29.04.14	17.52	Closure of gas valve
		08.05.14	18.55	22.05.14	15.59	Stopped due to low demand and high frequency
		23.05.14	18.26	04.06.14	14.18	
		12.06.14	16.56	18.06.14	18.34	Turbine compartment vent fan pressure switch malfunctioned backing down after wards due to low demand
		23.06.14	05.11	27.06.14	18.58	Purge valve 20 PG-2 misbehaviour, I-P Convertor found misbehaving trip, thereafter shutdown due to low demand and high frequency

Unit	Capacity in MW	Outage		Synchronization		Reason of Outage
		Date	Time	Date	Time	
3	216	28.10.13	00.00	30.06.14	23:59	Commissioned on 28.10.13 and Stopped due to low demand and high frequency

Unit	Capacity in MW	Outage		Synchronization		Reason of Outage
		Date	Time	Date	Time	
4	216	27.02.14	00.00	30.06.14	23:59	Commissioned on 27.02.14 and Stopped due to low demand and high frequency

Unit	Capacity in MW	Outage		Synchronization		Reason of Outage
		Date	Time	Date	Time	
STG-1	254	11.10.13	10.50	23.05.14	00.30	Stopped due to low demand and high frequency
		23.05.14	18.28	04.06.14	14.18	
		12.06.14	17.13	12.06.14	18.03	LP drum level high
		13.06.14	09.20	16.06.14	21.21	Stopped due to low demand and high frequency
		23.06.14	05.11	23.6.14	12.18	

Unit	Capacity in MW	Outage		Synchronization		Reason of Outage
		Date	Time	Date	Time	
STG-2	254	27.03.14	00.00	30.06.14	23:59	Commissioned on 27.03.14 and Stopped due to low demand and high frequency

(F) RITHALA POWER STATION

Unit	Capacity in MW	Outage		Synchronization		Reason of Outage
		Date	Time	Date	Time	
1	31.8	19.03.13	17:32	30.06.14	23:59	Stopped due to low demand and high frequency

Unit	Capacity in MW	Outage		Synchronization		Reason of Outage
		Date	Time	Date	Time	
2	31.8	07.06.13	22:41	30.06.14	23:59	Stopped due to low demand and high frequency

Unit	Capacity in MW	Outage		Synchronization		Reason of Outage
		Date	Time	Date	Time	
STG	31.8	07.06.13	22:38	30.06.14	23:59	Stopped due to low demand and high frequency

4

ALLOCATION OF POWER TO DELHI

A)

Allocation of power to Delhi from Unallocated quota of Central Sector Generating Stations to Delhi w.e.f. 27.03.2013**Time block 00.00hrs. to 24.00hrs. @ 0% allocation from Unallocated Quota**

Name of the Stn	Installed capacity	Total Un-allocated	Basic Allocation	Basic Allocation at periphery	Allocation out of Unallocated Quota	Allocation out of Un-allocation Quota at Delhi periphery	Total allocation at Delhi periphery
1	2	3	4	5	6	7	(8)=(5)+(7)
<u>NTPC STATIONS</u>							
Singrauli STPS	2000	300	150	130	0	0	130
Rihand-I	1000	150	100	87	0	0	87
Rihand Stage -II	1000	150	126	109	0	0	109
Rihand Stage -III	1000	150	132	115	0	0	115
ANTA GPS	419	63	44	41	0	0	41
Auriya GPS	663.36	99	72	67	0	0	67
Dadri GPS	829.78	129	91	85	0	0	85
Dadri NCTPS (Th)	840	0	756	657	0	0	657
Dadri NCTPS (Th) Stage-II	980	147	735	639	0	0	639
Unchahaar-I TPS	420	20	24	21	0	0	21
Unchahaar-II TPS	420	63	47	41	0	0	41
Unchahaar-III TPS	210	31	29	25	0	0	25
TOTAL	9782	1302	2306	2016	0	0	2016
<u>NHPC</u>							
Baira Suil HPS	180	0	20	19	0	0	19
Salal HPS	690	0	80	76	0	0	76
Tanakpur HEP	94	0	12	11	0	0	11
Chamera HEP	540	0	43	41	0	0	41
Chamera-II HEP	300	54	40	38	0	0	38
Chamera-III HEP	231	35	29	28	0	0	28
URI-I HEP	480	0	53	50	0	0	50
URI-II HEP	180	0	24	23	0	0	23
Sewa HEP	120	18	16	15	0	0	15
Dhaulti Ganga HEP	280	42	37	35	0	0	35
Dulhasti HEP	390	58	50	48	0	0	48
Parbati-III HEP	390	50	50	47	0	0	47
TOTAL	3875	256	454	431	0	0	431
<u>NPC</u>							
Narora APS	440	64	47	41	0	0	41
RAPP (C)	440	64	56	49	0	0	49
TOTAL	880	128	103	89	0	0	89
<u>SVJNL</u>							
Nathpa Jhakri HEP	1500	149	142	135	0	0	135
<u>THDC</u>							
Tehri Hydro	1000	99	103	98	0	0	98
Koteshwar HEP	400	40	39	37	0	0	37
TOTAL	1400	139	142	135	0	0	135
Total	17437	1974	3147	2807	0	0	2807
<u>Allocation from ER and Tala HEP</u>							
Farakka	1600	0	22	19	0	0	19
Kahalgaon	840	0	51	43	0	0	43
Talchar	1000	0	0	0	0	0	0
Tala HEP	1020	153	30	25	0	0	25
Kahalgaon-II	1500	0	157	131	0	0	131
Total ER	5960	153	261	217	0	0	217
<u>Joint Venture</u>							
Jhajjar TPS	1500	114	377	338	0	0	338
Ultra Mega Projects							
Sasan	1320	0	149	128	0	0	128
Grand Total	26217	2241	3933	3491	0	0	3491

5 ALLOCATION OF POWER TO DISCOMS

A) ALLOCATION OF POWER TO VARIOUS LICENCEES AS PER ORDER OF DERC AND DECISION OF GNCTD FOR ALLOCATION OF CENTRAL SECTOR STATIONS (DADRI THERMAL & BTPS) AND STATE SECTOR GENERATING STATIONS w.e.f. 06.08.2013.

(Allocation In %)

(A) 10.00hrs. to 17.00hrs.

SOURCES	LICENSEES					
	NDMC	MES	NDPL	BRPL	BYPL	TOTAL
1. Central Sector without Dadri (Th)	0	0	29.18	43.58	27.24	100.00
2. Dadri (Th)	16.63	0	24.22	36.86	22.39	100.00
3. BTPS	17.73	7.09	21.81	33.2	20.17	100.00
4. RPH	0	0	29.025	44.133	26.842	100.00
5. GT	0	0	29.02	44.16	26.82	100.00
6. Pragati	30.3	0	20.22	30.78	18.7	100.00
7. DVC	0	0	29.18	43.58	27.24	100.00
8. BAWANA CCGT*	7.30	1.82	20.688	30.888	19.304	80.00

(B) 00.00hrs. to 10.00hrs. and 17.00hrs. to 24.00hrs.

SOURCES	LICENSEES					
	NDMC	MES	NDPL	BRPL	BYPL	TOTAL
1. Central Sector without Dadri (Th)	0	0	29.18	43.58	27.24	100.00
2. Dadri (Th)	16.53	0	24.22	36.86	22.39	100.00
3. BTPS	17.73	7.09	21.81	33.2	20.17	100.00
4. RPH	0	0	29.025	44.133	26.842	100.00
5. GT	0	0	29.02	44.16	26.82	100.00
6. Pragati	30.3	0	20.22	30.78	18.7	100.00
7. DVC	0	0	29.18	43.58	27.24	100.00
8. BAWANA CCGT*	7.30	1.82	20.688	30.888	19.304	80.00

* 20% POWER OF BAWANA CCGT ALLOCATED TO HARYANA (10%) & PUNJAB (10%)

6 POWER AVAILABILITY-DEMAND POSITION AT THE TIME OF PEAK DEMAND MET DURING JUNE 2014

All figures in MW

Date	Time of peak demand	Generation within Delhi								Import from the Grid	Schedule from the Grid	OD(-)/UD(+)	Demand met	Shedding	Un-Restricted Demand
		RPH	GT	PPCL	Rithala	Bawana	Towmcl	BTPS	Total						
(1)	(2)	(3)	(4)	(5)	(6)	(7)	(8)		(9)=(3) to (8)	(10)	(11)	(12)=(11) - (10)	(13)=(11)+ (12)	(14)	(15)=(13)+ (14)
1	23.46.42	93	141	140	0	-3	14	502	887	3397	3452	-55	4284	125	4409
2	14.35.29	93	135	134	0	-2	13	610	983	3770	3807	-37	4753	151	4904
3	15.26.34	95	111	130	0	-3	14	487	834	4056	4107	-51	4890	108	4998
4	23.50.06	43	118	136	0	210	14	591	1112	3908	3846	62	5020	45	5065
5	16.10.24	95	107	128	0	263	14	613	1220	4030	4150	-120	5250	23	5273
6	14.03.19	96	93	129	0	255	14	610	1197	4003	3844	159	5200	241	5441
7	15.37.22	95	115	129	0	270	14	529	1152	4000	4004	-4	5152	93	5245
8	16.01.10	96	119	129	0	258	14	376	992	3834	3808	26	4826	51	4877
9	15.34.30	0	117	128	0	264	14	572	1095	4096	4100	-4	5191	452	5643
10	15.33.29	99	114	128	0	269	14	607	1231	4093	4148	-55	5324	137	5461
11	14.45.03	98	164	130	0	474	14	592	1472	3998	3909	89	5470	64	5534
12	12.33.54	100	168	132	0	441	16	585	1442	3811	3562	249	5253	85	5338
13	16.26.20	100	171	137	0	-5	14	466	883	3964	3820	144	4847	1	4848
14	00.00.06	100	141	143	0	-5	15	514	908	3495	3590	-95	4403	0	4403
15	23.58.19	96	146	144	0	-4	15	514	911	3633	3683	-50	4544	112	4656
16	15.51.46	98	170	125	0	-4	16	585	990	4392	4104	288	5382	152	5534
17	15.04.42	99	161	130	0	273	15	572	1250	4189	4120	69	5439	169	5608
18	16.08.11	97	170	175	0	275	9	426	1152	4376	4257	119	5528	106	5634
19	14.46.07	92	166	273	0	456	16	400	1403	4130	4170	-40	5533	155	5688
20	15.03.26	90	159	270	0	456	17	296	1288	4236	4286	-50	5524	136	5660
21	00.01.02	90	135	277	0	447	12	501	1462	3826	4006	-180	5288	57	5345
22	00.39.00	89	142	140	0	283	12	592	1258	3796	3669	127	5054	56	5110
23	16.03.06	98	140	262	0	228	12	509	1249	3923	3813	110	5172	0	5172
24	16.08.55	93	135	262	0	273	18	589	1370	3881	3881	0	5251	6	5257
25	23.08.43	103	155	264	0	288	18	569	1397	3676	3666	10	5073	70	5143
26	15.42.28	103	91	262	0	275	18	566	1315	2945	3002	-57	4260	2	4262
27	15.29.42	103	112	263	0	273	18	490	1259	4105	4241	-136	5364	116	5480
28	15.00.54	97	117	277	0	283	18	516	1308	3850	4024	-174	5158	19	5177
29	00.00.57	101	120	289	0	268	18	514	1310	3796	3673	123	5106	15	5121
30	16.03.24	92	71	284	0	276	18	595	1336	3993	3978	15	5329	61	5390

POWER AVAILABILITY- DEMAND POSITION AT THE TIME OF MAXIMUM UNRESTRICTED DEMAND DURING JUNE 2014

Date	Time of peak demand	Generation within Delhi								Import from the Grid	Schedule from the Grid	OD(-)/UD(+)	Demand met	Shedding	Un-Restricted Demand
		RPH	GT	PPCL	Rithala	Bawana	Towmcl	BTPS	Total						
(1)	(2)	(3)	(4)	(5)	(6)	(7)	(8)		(9)=(3) to (8)	(10)	(11)	(12)=(11) - (10)	(13)=(11)+(12)	(14)	(15)=(13)+(14)
1	23.46.42	93	141	140	0	-3	14	502	887	3397	3452	-55	4284	125	4409
2	14.35.29	93	135	134	0	-2	13	610	983	3770	3807	-37	4753	151	4904
3	15.26.34	95	111	130	0	-3	14	487	834	4056	4107	-51	4890	108	4998
4	23.00.00	42	117	136	0	64	14	585	958	3762	3861	-99	4720	407	5127
5	16.10.24	95	107	128	0	263	14	613	1220	4030	4150	-120	5250	23	5273
6	14.30.00	96	92	129	0	270	14	610	1211	3855	3973	-118	5066	460	5526
7	15.37.22	95	115	129	0	270	14	529	1152	4000	4004	-4	5152	93	5245
8	23.30.00	99	125	134	0	264	14	415	1052	3756	3906	-150	4808	151	4959
9	15.34.30	0	117	128	0	264	14	572	1095	4096	4100	-4	5191	452	5643
10	15.33.29	99	114	128	0	269	14	607	1231	4093	4148	-55	5324	137	5461
11	14.45.03	98	164	130	0	474	14	592	1472	3998	3909	89	5470	64	5534
12	12.33.54	100	168	132	0	441	16	585	1442	3811	3562	249	5253	85	5338
13	16.26.20	100	171	137	0	-5	14	466	883	3964	3820	144	4847	1	4848
14	22.30.00	99	146	142	0	-4	13	568	964	3323	3727	-403	4287	70	4436
15	23.58.19	96	146	144	0	-4	15	514	911	3633	3683	-50	4544	112	4656
16	15.51.46	98	170	125	0	-4	16	585	990	4392	4104	288	5382	152	5534
17	15.04.42	99	161	130	0	273	15	572	1250	4189	4120	69	5439	169	5608
18	14.30.00	97	166	130	0	305	13	404	1115	4252	4119	133	5367	351	5718
19	14.46.07	92	166	273	0	456	16	400	1403	4130	4170	-40	5533	155	5688
20	15.30.00	88	157	269	0	452	12	297	1275	4184	4332	-148	5459	277	5736
21	00.01.02	90	135	277	0	447	12	501	1462	3826	4006	-180	5288	57	5345
22	00.39.00	89	142	140	0	283	12	592	1258	3796	3669	127	5054	56	5110
23	16.03.06	98	140	262	0	228	12	509	1249	3923	3813	110	5172	0	5172
24	16.08.55	93	135	262	0	273	18	589	1370	3881	3881	0	5251	6	5257
25	23.08.43	103	155	264	0	288	18	569	1397	3676	3666	10	5073	70	5143
26	15.42.28	103	91	262	0	275	18	566	1315	2945	3002	-57	4260	2	4262
27	15.29.42	103	112	263	0	273	18	490	1259	4105	4241	-136	5364	116	5480
28	15.00.54	97	117	277	0	283	18	516	1308	3850	4024	-174	5158	19	5177
29	00.00.57	101	120	289	0	268	18	514	1310	3796	3673	123	5106	15	5121
30	16.03.24	92	71	284	0	276	18	595	1336	3993	3978	15	5329	61	5390

SOURCEWISE SCHEDULED DRAWL FROM NORTHERN GRID AS WELL AS AVAILABILITY WITHIN DELHI FOR JUNE 2014

A) AVAILABILITY FROM GENCO AND PRAGATI STNs. (all fig in MUs)

A (i) RPH	74.942
(ii) GT+STG	98.450
(iii) PRAGATI	140.174
(iv) RITHALA	0.000
(v) BAWANA CCGT	163.713
(vi) Timarpur – Okhla	13.077
TOTAL	490.356
B) AVAILABILITY FROM BTPS	385.284
C) AUXILIARY CONSUMPTION OF GENERATING STNs. EXCLUDING BTPS	26.284
D) NET GENERATION AVAILABLE WITHIN DELHI(A+B-C)	849.166

B) SOURCE WISE SCHEDULED DRAWL FROM THE NORTHERN GRID

NAME OF THE STATION	AVAILABILITY AT POWER PLANT	AVAILABILITY AT DELHI PERIPHERY	ALLOCATION MADE BY NRLDC AT POWER PLANT	ALLOCATION MADE BY NRLDC AT DELHI PERIPHERY
B/SUIL	12.289	11.915	12.289	11.915
SALAL	52.392	50.793	52.392	50.793
SASAN	136.502	132.380	135.878	131.776
TANKAPUR	6.121	5.935	6.121	5.935
CHAMERA	30.087	29.173	30.087	29.173
CHAMERA -II	28.667	27.797	28.667	27.797
CHAMERA -III	20.863	20.229	20.863	20.229
DHAULIGANGA	11.776	11.422	11.776	11.422
SEWA -2	9.597	9.305	9.597	9.305
URI	37.660	36.515	37.660	36.515
URI-II	22.842	22.147	22.842	22.147
KOTESHWAR	10.206	9.898	10.206	9.898
PARBATI3	15.395	14.931	15.395	14.931
RAMPUR	0.000	0.000	0.000	0.000
MUNDRA_UMPP	0.000	0.000	0.000	0.000
ANTA (GAS)	19.897	19.289	13.963	13.541
ANTA (RLNG)	7.465	7.234	0.000	0.000
ANTA (LIQUID)	0.000	0.000	0.000	0.000
DADRI (GAS)	21.901	21.248	11.048	10.720
DADRI (RLNG)	40.745	39.494	0.000	0.000
DADRI (LIQUID)	0.034	0.033	0.000	0.000
AURAIYA (GAS)	15.123	14.668	8.187	7.943
AURAIYA (RLNG)	23.207	22.497	0.000	0.000
AURAIYA (LIQUID)	0.100	0.097	0.000	0.000
SINGRAULI	89.356	86.622	88.713	86.000
RIHAND -I	61.561	59.691	58.562	56.786
RIHAND -II	59.487	57.685	57.101	55.374
RIHAND -III	82.932	80.410	80.663	78.213
UNCHAHAAR-I	16.434	15.934	7.752	7.520
UNCHAHAAR-II	32.317	31.335	15.277	14.819
UNCHAHAAR-III	19.979	19.372	9.549	9.262
DADRI (TH)	526.615	510.605	415.033	402.418
DADRI (TH) STAGE-II	520.470	504.649	427.125	414.186
NAPP	19.480	18.890	19.480	18.890
RAPP 'B'	0.000	0.000	0.000	0.000
RAPP 'C'	21.598	20.940	21.553	20.896
NATHPA JHAKRI	101.840	98.730	74.100	71.837
DULASTI	31.676	30.708	31.676	30.708
TEHRI	19.739	19.144	19.739	19.144
JHAJJAR	106.071	102.865	10.853	10.534
KHELGAON	28.741	27.866	21.110	20.474
KHELGAON-II	92.309	89.487	79.180	76.773
FARAKA	11.589	11.237	10.646	10.324
TALA	13.279	12.876	13.205	12.804
TALCHER	0.000	0.000	0.000	0.000

NAME OF THE STATION	AVAILABILITY AT POWER PLANT	AVAILABILITY AT DELHI PERIPHERY	ALLOCATION MADE BY NRLDC AT POWER PLANT	ALLOCATION MADE BY NRLDC AT DELHI PERIPHERY
DVC	176.763	174.909	174.909	169.583
RAJASTHAN	0.110	0.109	0.109	0.107
HARYANA	0.082	0.081	0.081	0.079
TRIPURA	3.293	3.238	3.238	3.139
DVC CTPS (BRPL)	0.000	0.000	0.000	0.000
DVC CTPS (BYPL)	0.000	0.000	0.000	0.000
DVC CTPS (NDPL)	0.000	0.000	0.000	0.000
METHON POWER(NDPL)LT-06	187.909	185.941	185.941	180.313
DVC MEJIA (LT-08)(BYPL)	0.000	0.000	0.000	0.000
URS	0.624	0.607	0.624	0.607
JAMMU & KASHMIR	248.192	244.977	244.977	237.515
HIMACHAL PRADESH	22.247	21.940	21.940	21.238
MEGHALAYA	4.671	4.605	4.605	4.460
MADHYA PRADESH	11.124	10.893	10.893	10.550
WEST BENGAL	0.123	0.122	0.122	0.118
DVC (FOR NDPL) LT-09	0.000	0.000	0.000	0.000
HARYANA (LT-05)	8.054	7.953	7.953	7.716
JHARKHAND	14.566	14.456	14.456	14.016
TO ORISSA	-0.087	-0.088	-0.088	-0.091
TO UTTAR PRADESH	-8.674	-8.841	-8.841	-9.118
TO KERALA	-0.626	-0.638	-0.638	-0.659
POWER EXCHANGE(IEX)	31.504	30.597	31.504	30.597
TO POWER EXCHANGE (IEX)	-152.321	-157.145	-152.321	-157.145
POWRER EXCHANGE(PX)	0.000	0.000	0.000	0.000
TO POWER EXCHANGE (PX)	-5.286	-5.449	-5.286	-5.449
TO SHARE PROJECT (HARYANA)	-16.084	-16.582	-16.084	-16.582
TO SHARE PROJECT (PUNJAB)	-16.085	-16.583	-16.085	-16.583
TOTAL	2888.440	2801.147	2390.299	2305.409

C) AGENCY WISE BREAKUP OF ENERGY SCHEDULED DRAWL FROM THE GRID

NAME OF THE STATION	AVAILABILITY AT POWER PLANT	AVAILABILITY AT DELHI PERIPHERY	ALLOCATION MADE BY NRLDC AT POWER PLANT	ALLOCATION MADE BY NRLDC AT DELHI PERIPHERY
NTPC - NR	1537.622	1490.863	1192.974	1156.780
NTPC - ER	132.639	128.589	110.937	107.571
NHPC	279.364	270.868	279.364	270.868
NPC	41.078	39.830	41.033	39.786
SASAN	136.502	132.380	135.878	131.776
KOTESHWAR	10.206	9.898	10.206	9.898
MUNDRA_UMPP	0.000	0.000	0.000	0.000
NATHPA JHAKRI	101.840	98.730	74.100	71.837
TEHRI	19.739	19.144	19.739	19.144
TALA	13.279	12.876	13.205	12.804
JHAJJAR	106.071	102.865	10.853	10.534
TALCHER	0.000	0.000	0.000	0.000
DVC	176.763	174.909	174.909	169.583
RAJASTHAN	0.110	0.109	0.109	0.107
HARYANA	0.082	0.081	0.081	0.079
TRIPURA	3.293	3.238	3.238	3.139
DVC CTPS (BRPL)	0.000	0.000	0.000	0.000
DVC CTPS (BYPL)	0.000	0.000	0.000	0.000
DVC CTPS (NDPL)	0.000	0.000	0.000	0.000
METHON POWER (NDPL)-LT-06	187.909	185.941	185.941	180.313
DVC MEJIA (LT-08)(BYPL)	0.000	0.000	0.000	0.000
URS	0.624	0.607	0.624	0.607
JAMMU & KASHMIR	248.192	244.977	244.977	237.515
HIMACHAL PRADESH	22.247	21.940	21.940	21.238
MEGHALAYA	4.671	4.605	4.605	4.460
MADHYA PRADESH(WR)	11.124	10.893	10.893	10.550
WEST BENGAL	0.123	0.122	0.122	0.118
DVC (FOR NDPL) LT-09	0.000	0.000	0.000	0.000
HARYANA (LT -05)	8.054	7.953	7.953	7.716
JHARKHAND	14.566	14.456	14.456	14.016
POWER EXCHANGE(IEX)	31.504	30.597	31.504	30.597
POWER EXCHANGE(PX)	0.000	0.000	0.000	0.000
TOTAL	3087.603	3006.472	2589.642	2511.035

D) AGENCY WISE BREAKUP OF ENERGY SCHEDULED BY NRLDC FOR EXPORT TO OTHER UTILITIES FROM DTL

NAME OF THE STATION	AVAILABILITY AT POWER PLANT	AVAILABILITY AT PERIPHERY	ALLOCATION MADE BY NRLDC AT POWER PLANT	ALLOCATION MADE BY NRLDC AT POWER PERIPHERY
TO MEGHALAYA	0.000	0.000	0.000	0.000
TO ORISSA	-0.087	-0.088	-0.088	-0.091
TO UTTAR PRADESH	-8.674	-8.841	-8.841	-9.118
TO JAMMU & KASHMIR	0.000	0.000	0.000	0.000
TO ANDHRA	0.000	0.000	0.000	0.000
TO KERALA	-0.626	-0.638	-0.638	-0.659
TO MADHYA PRADESH	0.000	0.000	0.000	0.000
TO NEPAL	0.000	0.000	0.000	0.000
TO RAJASTHAN	0.000	0.000	0.000	0.000
TO MAHARASHTRA	0.000	0.000	0.000	0.000
TO UTTARANCHAL	0.000	0.000	0.000	0.000
TO HIMACHAL PRADESH	0.000	0.000	0.000	0.000
TO WEST BENGAL	0.000	0.000	0.000	0.000
TO POWER EXCHANGE (IEX)	-152.321	-157.145	-152.321	-157.145
TO POWER EXCHANGE (PX)	-5.286	-5.449	-5.286	-5.449
TO SHARE PROJECT (HARYANA)	-16.084	-16.582	-16.084	-16.582
TO SHARE PROJECT (PUNJAB)	-16.085	-16.583	-16.085	-16.583
TOTAL	-199.163	-205.325	-199.343	-205.626
TOTAL SCHEDULED DRAWAL FROM THE GRID	2888.440	2801.147	2390.299	2305.409
TOTAL CONSUMPTION INCLUDING AUX. OF GENERATING STNs. EXCLUDING BTPS				3225.021
NET CONSUMPTION				3198.737
AVAILABILITY WITHIN DELHI				849.166
ACTUAL DRAWAL FROM THE GRID				2349.571
OVER DRAWAL(+)/UNDER DRAWAL(-) FROM THE GRID ON THE BASIS OF SCHEDULED ALLOCATION MADE BY NRLDC TO DELHI AT PERIPHERY				44.162
LOAD SHEDDING				37.995
UNRESTRICTED DEMAND (GROSS)				3263.016
UNRESTRICTED DEMAND (NET)				3236.732
MAX. NET CONSUMPTION				116.735 ON 20.06.2014
MAX. LOAD SHEDDING				505MW ON 09.06.2014 AT 13.15HRS.
PEAK LOAD	Peak Demand during the month			SHEDDING AT PEAK TIME
DAY PEAK	5533MW AT 14.46.07HRS ON 19.06.2014			155 MW
EVENING PEAK	5356MW AT 22.30.00HRS ON 20.06.2014			55 MW
P.L.F. OF GENCO AND PRAGATI STNs.	RPH			77.10%
	GT			50.64%
	PRAGATI			59.00%
	RITHALA			0.00%
	BAWANA			16.58%
	Timarpur Okhla			113.52%

DATE	No. of Under Freq. Relay Operated	Shedding due to under frequency relay operation in MUs					Shedding due to Grid Restrictions (Over drawl / low freq.)			
		BSES		NDPL	NDMC	TOTAL	BSES		NDPL	NDMC
		BYPL	BRPL				BYPL	BRPL		
01-Jun-14	0	0.000	0.000	0.000	0.000	0.000	0.000	0.000	0.000	0.000
02-Jun-14	0	0.000	0.000	0.000	0.000	0.000	0.000	0.000	0.000	0.000
03-Jun-14	0	0.000	0.000	0.000	0.000	0.000	0.008	0.052	0.000	0.000
04-Jun-14	0	0.000	0.000	0.000	0.000	0.000	0.330	0.908	0.003	0.000
05-Jun-14	0	0.000	0.000	0.000	0.000	0.000	0.000	0.007	0.000	0.000
06-Jun-14	0	0.000	0.000	0.000	0.000	0.000	0.000	0.180	0.000	0.000
07-Jun-14	0	0.000	0.000	0.000	0.000	0.000	0.000	0.000	0.000	0.000
08-Jun-14	0	0.000	0.000	0.000	0.000	0.000	0.000	0.134	0.000	0.000
09-Jun-14	0	0.000	0.000	0.000	0.000	0.000	0.000	0.387	0.000	0.000
10-Jun-14	0	0.000	0.000	0.000	0.000	0.000	0.000	0.011	0.000	0.000
11-Jun-14	0	0.000	0.000	0.000	0.000	0.000	0.000	0.000	0.000	0.000
12-Jun-14	2	0.000	0.006	0.000	0.000	0.006	0.025	0.037	0.008	0.000
13-Jun-14	0	0.000	0.000	0.000	0.000	0.000	0.061	0.000	0.026	0.000
14-Jun-14	0	0.000	0.000	0.000	0.000	0.000	0.000	0.016	0.000	0.000
15-Jun-14	0	0.000	0.000	0.000	0.000	0.000	0.000	0.000	0.000	0.000
16-Jun-14	0	0.000	0.000	0.000	0.000	0.000	0.000	0.687	0.022	0.000
17-Jun-14	0	0.000	0.000	0.000	0.000	0.000	0.000	0.187	0.000	0.000
18-Jun-14	0	0.000	0.000	0.000	0.000	0.000	0.000	0.000	0.000	0.000
19-Jun-14	0	0.000	0.000	0.000	0.000	0.000	0.000	0.000	0.000	0.000
20-Jun-14	0	0.000	0.000	0.000	0.000	0.000	0.000	0.000	0.035	0.000
21-Jun-14	0	0.000	0.000	0.000	0.000	0.000	0.000	0.000	0.000	0.000
22-Jun-14	0	0.000	0.000	0.000	0.000	0.000	0.000	0.000	0.000	0.000
23-Jun-14	0	0.000	0.000	0.000	0.000	0.000	0.000	0.000	0.000	0.000
24-Jun-14	0	0.000	0.000	0.000	0.000	0.000	0.000	0.011	0.005	0.000
25-Jun-14	0	0.000	0.000	0.000	0.000	0.000	0.000	0.039	0.026	0.000
26-Jun-14	0	0.000	0.000	0.000	0.000	0.000	0.000	0.241	0.000	0.000
27-Jun-14	0	0.000	0.000	0.000	0.000	0.000	0.000	0.000	0.058	0.000
28-Jun-14	0	0.000	0.000	0.000	0.000	0.000	0.000	0.000	0.011	0.000
29-Jun-14	0	0.000	0.000	0.000	0.000	0.000	0.000	0.000	0.000	0.000
30-Jun-14	0	0.000	0.000	0.000	0.000	0.000	0.000	0.122	0.006	0.000
TOTAL	2	0.000	0.006	0.000	0.000	0.006	0.424	3.019	0.200	0.000

Date	Grid Restrictions TTC/ATC Violation to Restrict over drawal				Due to New Grid code regulation Deviation		
	BSES		NDPL	NDMC	BSES		NDPL
	BRPL	BYPL			BRPL	BYPL	
01-Jun-14	0.000	0.000	0.000	0.000	0.000	0.000	0.000
02-Jun-14	0.000	0.000	0.000	0.000	0.000	0.000	0.000
03-Jun-14	0.000	0.000	0.000	0.000	0.000	0.000	0.000
04-Jun-14	0.000	0.000	0.000	0.000	0.000	0.000	0.000
05-Jun-14	0.000	0.000	0.000	0.000	0.000	0.000	0.000
06-Jun-14	0.000	0.000	0.000	0.000	0.000	0.000	0.000
07-Jun-14	0.000	0.000	0.000	0.000	0.000	0.000	0.000
08-Jun-14	0.000	0.000	0.000	0.000	0.000	0.000	0.000
09-Jun-14	0.000	0.000	0.000	0.000	0.000	0.000	0.000
10-Jun-14	0.000	0.000	0.000	0.000	0.000	0.000	0.000
11-Jun-14	0.000	0.000	0.000	0.000	0.000	0.000	0.000
12-Jun-14	0.000	0.000	0.000	0.000	0.000	0.000	0.000
13-Jun-14	0.000	0.000	0.000	0.000	0.000	0.000	0.000
14-Jun-14	0.000	0.000	0.000	0.000	0.000	0.000	0.000
15-Jun-14	0.000	0.000	0.000	0.000	0.000	0.000	0.000
16-Jun-14	0.000	0.000	0.000	0.000	0.000	0.000	0.000
17-Jun-14	0.000	0.000	0.000	0.000	0.000	0.000	0.000
18-Jun-14	0.000	0.000	0.000	0.000	0.000	0.000	0.000
19-Jun-14	0.000	0.000	0.000	0.000	0.000	0.000	0.000
20-Jun-14	0.000	0.000	0.000	0.000	0.000	0.000	0.000
21-Jun-14	0.000	0.000	0.000	0.000	0.000	0.000	0.000
22-Jun-14	0.000	0.000	0.000	0.000	0.000	0.000	0.000
23-Jun-14	0.000	0.000	0.000	0.000	0.000	0.000	0.000
24-Jun-14	0.000	0.000	0.000	0.000	0.000	0.000	0.000
25-Jun-14	0.000	0.000	0.000	0.000	0.000	0.000	0.000
26-Jun-14	0.000	0.000	0.000	0.000	0.000	0.000	0.000
27-Jun-14	0.000	0.000	0.000	0.000	0.000	0.000	0.000
28-Jun-14	0.000	0.000	0.000	0.000	0.000	0.000	0.000
29-Jun-14	0.000	0.000	0.000	0.000	0.000	0.000	0.000
30-Jun-14	0.000	0.000	0.000	0.000	0.000	0.000	0.000
TOTAL	0.000	0.000	0.000	0.000	0.000	0.000	0.000

Date	Shedding due to Transmission/Grid Constraints in Central Sector Stations				TOTAL	TOTAL SHEDDING DUE TO GRID RESTRICTIONS	Due to T&D Constraints				
	BSES		NDPL	NDMC			DTL				
	BYPL	BRPL					BSES		NDPL	NDMC	MES
			BYPL	BRPL							
01-Jun-14	0.000	0.000	0.000	0.000	0.000	0.000	0.000	0.632	0.155	0.000	0.000
02-Jun-14	0.000	0.000	0.000	0.000	0.000	0.000	0.102	1.895	0.000	0.000	0.000
03-Jun-14	0.000	0.000	0.000	0.000	0.060	0.060	0.000	1.289	0.020	0.000	0.000
04-Jun-14	0.000	0.000	0.000	0.000	1.241	1.241	0.265	0.377	0.007	0.000	0.000
05-Jun-14	0.000	0.000	0.000	0.000	0.007	0.007	0.210	0.145	0.048	0.000	0.000
06-Jun-14	0.000	0.000	0.000	0.000	0.180	0.180	0.290	0.577	0.780	0.000	0.000
07-Jun-14	0.000	0.000	0.000	0.000	0.000	0.000	0.243	0.309	0.046	0.000	0.000
08-Jun-14	0.000	0.000	0.000	0.000	0.134	0.134	0.000	0.230	0.161	0.000	0.000
09-Jun-14	0.000	0.000	0.000	0.000	0.387	0.387	0.156	0.390	0.097	0.043	0.000
10-Jun-14	0.000	0.000	0.000	0.000	0.011	0.011	0.120	0.671	0.009	0.000	0.000
11-Jun-14	0.000	0.000	0.000	0.000	0.000	0.000	0.000	0.305	0.000	0.000	0.000
12-Jun-14	0.000	0.000	0.000	0.000	0.070	0.076	0.172	0.036	0.072	0.000	0.000
13-Jun-14	0.000	0.000	0.000	0.000	0.087	0.087	0.343	0.000	0.032	0.000	0.000
14-Jun-14	0.000	0.000	0.000	0.000	0.016	0.016	0.057	0.185	0.012	0.000	0.000
15-Jun-14	0.000	0.000	0.000	0.000	0.000	0.000	0.000	0.448	0.038	0.000	0.000
16-Jun-14	0.242	0.000	0.081	0.000	1.032	1.032	0.000	0.452	0.009	0.000	0.000
17-Jun-14	0.309	0.000	0.022	0.005	0.523	0.523	0.000	0.602	0.031	0.000	0.000
18-Jun-14	0.456	0.038	0.045	0.004	0.543	0.543	0.000	0.896	0.159	0.000	0.000
19-Jun-14	0.000	0.000	0.000	0.000	0.000	0.000	0.000	0.493	0.036	0.000	0.000
20-Jun-14	0.000	0.000	0.000	0.000	0.035	0.035	0.000	0.833	0.000	0.000	0.000
21-Jun-14	0.000	0.000	0.000	0.000	0.000	0.000	0.178	1.641	0.022	0.010	0.000
22-Jun-14	0.000	0.000	0.000	0.000	0.000	0.000	0.016	0.585	0.000	0.000	0.000
23-Jun-14	0.000	0.000	0.000	0.000	0.000	0.000	0.296	0.000	0.000	0.000	0.000
24-Jun-14	0.000	0.000	0.000	0.000	0.016	0.016	0.000	0.063	0.000	0.000	0.000
25-Jun-14	0.000	0.000	0.000	0.000	0.065	0.065	0.235	0.017	0.045	0.018	0.000
26-Jun-14	0.000	0.000	0.000	0.000	0.241	0.241	0.026	0.083	0.018	0.000	0.000
27-Jun-14	0.000	0.000	0.000	0.000	0.058	0.058	0.048	0.392	0.000	0.000	0.000
28-Jun-14	0.000	0.000	0.000	0.000	0.011	0.011	0.005	0.086	0.000	0.000	0.000
29-Jun-14	0.000	0.000	0.000	0.000	0.000	0.000	0.000	0.015	0.000	0.000	0.000
30-Jun-14	0.000	0.000	0.000	0.000	0.128	0.128	0.000	0.340	0.000	0.000	0.000
TOTAL	1.007	0.038	0.148	0.009	4.845	4.851	2.762	13.987	1.797	0.071	0.000

ALL FIGURES IN MUS

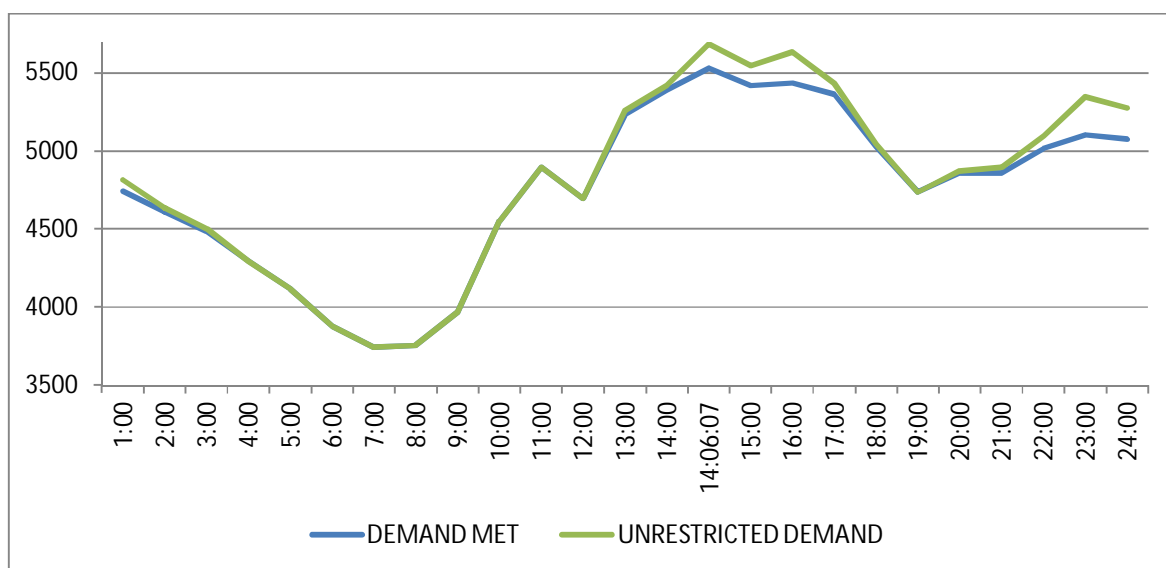
DATE	DUE TO T&D CONSTRAINTS				OTHER AGENCIES LIKE GENCO, BBMB, BTPS ETC.	THEFT PRONE SHEDDING			TOTAL SHEDDING DUE TO T&D CONSTS. & THEFT PRONE	GRAND TOTAL
	DISCOMS					BSES		NDPL		
	BSES		NDPL	NDMC		BSES				
	BYPL	BRPL				BYPL	BRPL			
1	23	24	25		26	27	28	29	30=18 to29	31=30+17
01-Jun-14	0.015	0.322	0.044	0.000	0.000	0.000	0.000	0.000	1.168	1.168
02-Jun-14	0.016	0.031	0.006	0.000	0.005	0.000	0.000	0.000	2.055	2.055
03-Jun-14	0.051	0.466	0.003	0.000	0.018	0.000	0.000	0.000	1.847	1.907
04-Jun-14	0.031	0.199	0.039	0.000	0.000	0.000	0.000	0.000	0.918	2.159
05-Jun-14	0.020	0.235	0.002	0.000	0.156	0.000	0.000	0.000	0.816	0.823
06-Jun-14	0.133	0.056	0.017	0.000	0.000	0.000	0.000	0.000	1.853	2.033
07-Jun-14	0.014	0.206	0.021	0.000	0.685	0.000	0.000	0.000	1.524	1.524
08-Jun-14	0.235	0.094	0.031	0.000	1.249	0.000	0.000	0.000	2.000	2.134
09-Jun-14	0.061	0.212	0.037	0.000	1.196	0.000	0.000	0.000	2.192	2.579
10-Jun-14	0.001	0.209	0.037	0.000	0.499	0.000	0.000	0.000	1.546	1.557
11-Jun-14	0.096	0.122	0.000	0.000	0.939	0.000	0.000	0.000	1.462	1.462
12-Jun-14	0.169	0.146	0.099	0.000	0.491	0.000	0.000	0.000	1.185	1.261
13-Jun-14	0.107	0.000	0.015	0.000	0.053	0.000	0.000	0.000	0.550	0.637
14-Jun-14	0.067	0.084	0.010	0.000	0.020	0.000	0.000	0.000	0.435	0.451
15-Jun-14	0.014	0.019	0.011	0.000	0.101	0.000	0.000	0.000	0.631	0.631
16-Jun-14	0.029	0.114	0.003	0.000	0.668	0.000	0.000	0.000	1.275	2.307
17-Jun-14	0.085	0.139	0.000	0.000	0.457	0.000	0.000	0.000	1.314	1.837
18-Jun-14	0.160	0.125	0.027	0.000	0.781	0.000	0.000	0.000	2.148	2.691
19-Jun-14	0.054	0.187	0.023	0.000	0.579	0.000	0.000	0.000	1.372	1.372
20-Jun-14	0.070	0.167	0.002	0.000	0.502	0.000	0.000	0.000	1.574	1.609
21-Jun-14	0.025	0.097	0.016	0.000	0.007	0.000	0.000	0.000	1.996	1.996
22-Jun-14	0.003	0.053	0.004	0.000	0.000	0.000	0.000	0.000	0.661	0.661
23-Jun-14	0.009	0.157	0.028	0.000	0.158	0.000	0.000	0.000	0.648	0.648
24-Jun-14	0.000	0.031	0.014	0.000	0.000	0.000	0.000	0.000	0.108	0.124
25-Jun-14	0.047	0.073	0.012	0.000	0.000	0.000	0.000	0.000	0.447	0.512
26-Jun-14	0.009	0.031	0.000	0.000	0.000	0.000	0.000	0.000	0.167	0.408
27-Jun-14	0.000	0.122	0.004	0.000	0.000	0.000	0.000	0.000	0.566	0.624
28-Jun-14	0.000	0.168	0.000	0.000	0.000	0.000	0.000	0.000	0.259	0.270
29-Jun-14	0.002	0.031	0.000	0.000	0.000	0.000	0.000	0.000	0.048	0.048
30-Jun-14	0.000	0.026	0.000	0.000	0.013	0.000	0.000	0.000	0.379	0.507
TOTAL	1.523	3.922	0.505	0.000	8.577	0.000	0.000	0.000	33.144	37.995

DATE	(NET CONS.)	MAXI. DEMAND MET DURING THE DAY	TIME OF OCCURRENCE OF MAX DEMAND	SHEDDING AT THIS TIME	UN-RESTRICTED DEMAND	MAXIMUM UN-RESTRICTED DEMAND DURING THE DAY	TIME OF MAX. UN-REST. DEMAND	DEMAND AT THAT TIME	SHEDDING AT THAT TIME
	In Mus.	IN MW	IN HRS.	IN MW	IN MW	IN MW	HRS.	IN MW	IN MW
1	32	33	34	35	36=33+35	37=39+40	38	39	40
01-Jun-14	88.383	4284	23:46:42	125	4409	4425	22:51:06	4400	25
02-Jun-14	96.832	4753	14:35:29	151	4904	4904	14:35:29	4753	151
03-Jun-14	101.009	4890	15:26:34	108	4998	4998	15:26:34	4890	108
04-Jun-14	106.020	5020	23:50:06	45	5065	5127	23:00	4720	407
05-Jun-14	108.601	5250	16:10:24	23	5273	5273	16:10:24	5250	23
06-Jun-14	108.685	5200	14:03:19	241	5441	5526	14:30	5066	460
07-Jun-14	109.206	5152	15:37:22	93	5245	5245	15:37:22	5152	93
08-Jun-14	104.101	4826	16:01:10	51	4877	4959	23:30	4808	151
09-Jun-14	112.105	5191	15:34:30	452	5643	5643	15:34:30	5191	452
10-Jun-14	111.418	5324	15:33:29	137	5461	5461	15:33:29	5324	137
11-Jun-14	114.322	5470	14:45:03	64	5534	5534	14:45:03	5470	64
12-Jun-14	107.047	5253	12:33:54	85	5338	5338	12:33:54	5253	85
13-Jun-14	94.473	4847	16:29:20	1	4848	4848	16:29:20	4847	1
14-Jun-14	93.495	4403	00:00:06	0	4403	4436	23:30	4338	98
15-Jun-14	92.626	4544	23:58:19	112	4656	4656	23:58:19	4544	112
16-Jun-14	108.588	5382	15:51:46	152	5534	5534	15:51:46	5382	152
17-Jun-14	111.796	5439	15:04:42	169	5608	5608	15:04:42	5439	169
18-Jun-14	115.227	5528	16:08:11	106	5634	5718	14:30	5367	351
19-Jun-14	113.252	5533	14:46:07	155	5688	5688	14:46:07	5533	155
20-Jun-14	116.735	5524	15:03:26	136	5660	5736	15:30	5459	277
21-Jun-14	113.802	5288	00:01:02	57	5345	5345	00:01:02	5288	57
22-Jun-14	105.327	5057	00:39:00	56	5113	5113	00:39:00	5057	56
23-Jun-14	106.504	5172	16:03:06	0	5172	5172	16:03:06	5172	0
24-Jun-14	107.369	5251	16:08:55	6	5257	5257	16:08:55	5251	6
25-Jun-14	105.938	5073	23:08:43	70	5143	5143	23:08:43	5073	70
26-Jun-14	108.404	5260	15:42:28	2	5262	5262	15:42:28	5260	2
27-Jun-14	110.826	5364	15:29:42	116	5480	5480	15:29:42	5364	116
28-Jun-14	109.838	5158	15:00:54	19	5177	5177	15:00:54	5158	19
29-Jun-14	106.828	5106	00:00:57	15	5121	5121	00:00:57	5106	15
30-Jun-14	109.980	5329	16:03:24	61	5390	5390	16:03:24	5329	61
TOTAL	3198.737	5533 19.06.14	14:46:07	155	5688	5736 20.06.14	15:30	5459	277

10 **LOAD PATTERN OF DELHI ON THE DAY OF PEAK DEMAND MET DURING JUNE 2014 ON 19.06.2014- 5533MW AT 14.46.07HRS.**

All figures in MW

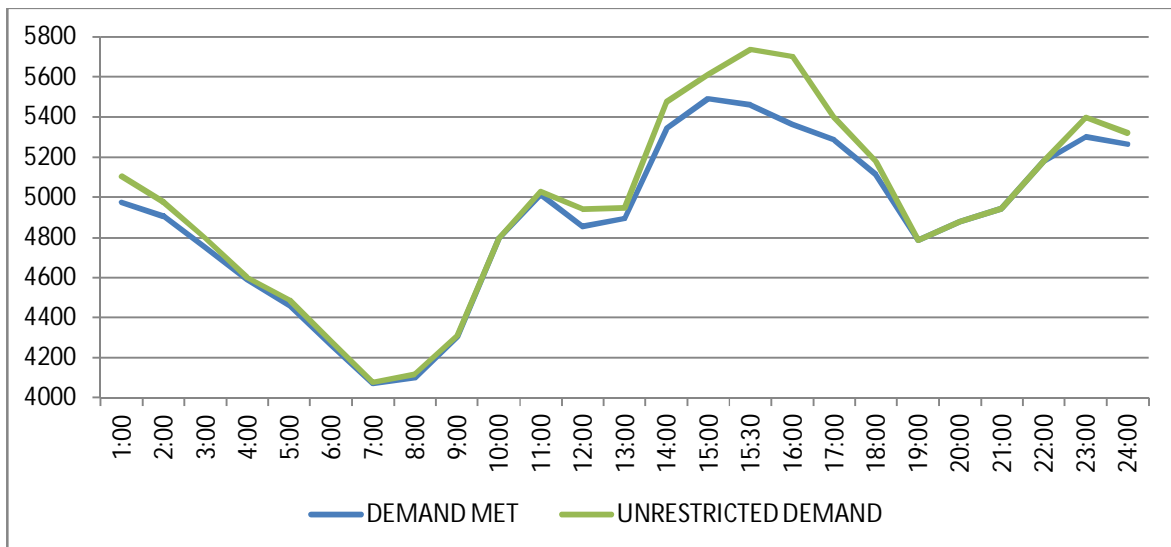
Hrs.	Demand	Load Shedding	Un-Restricted Demand
1:00	4743	71	4814
2:00	4611	24	4635
3:00	4484	15	4499
4:00	4293	0	4293
5:00	4119	0	4119
6:00	3876	0	3876
7:00	3742	0	3742
8:00	3752	0	3752
9:00	3968	0	3968
10:00	4553	0	4553
11:00	4895	0	4895
12:00	4698	0	4698
13:00	5232	29	5261
14:00	5390	31	5421
14:06:07	5533	155	5688
15:00	5421	125	5546
16:00	5435	202	5637
17:00	5364	73	5437
18:00	5030	14	5044
19:00	4735	0	4735
20:00	4862	12	4874
21:00	4861	37	4898
22:00	5015	81	5096
23:00	5102	246	5348
24:00	5077	198	5275
Total	113.252	1.372	114.624



11 LOAD PATTERN OF DELHI ON THE DAY OF MAXIMUM UN-RESTRICTED DEMAND DURING JUNE 2014 ON 20.06.2014- 5736MW at 15.30.00HRS.

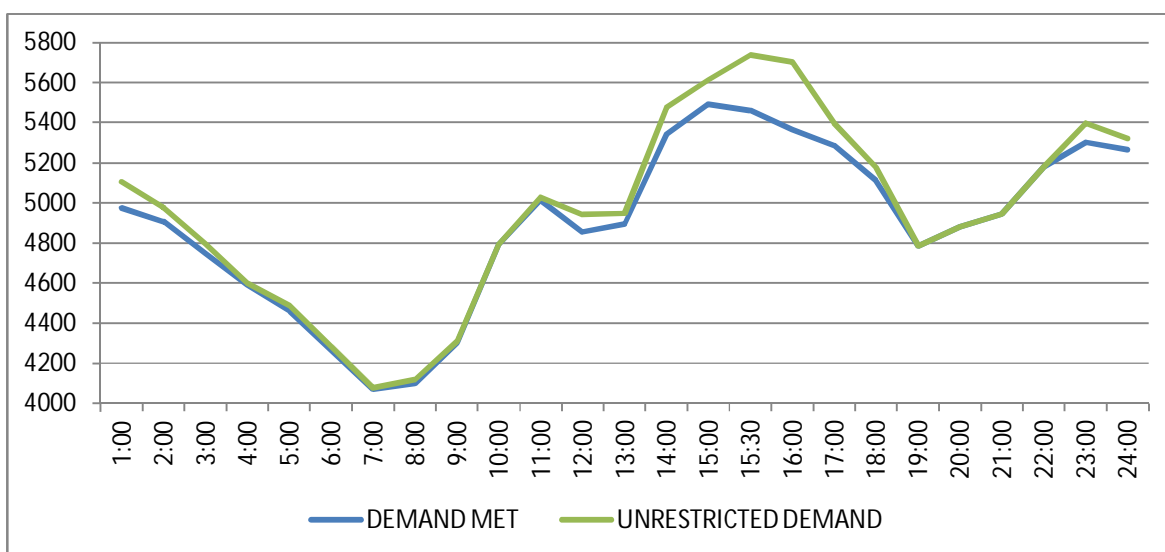
All figures in MW

Hrs.	Demand	Load Shedding	Un-Restricted Demand
1:00	4973	133	5106
2:00	4906	71	4977
3:00	4750	45	4795
4:00	4590	10	4600
5:00	4460	27	4487
6:00	4263	19	4282
7:00	4072	5	4077
8:00	4099	19	4118
9:00	4303	7	4310
10:00	4795	0	4795
11:00	5013	15	5028
12:00	4855	86	4941
13:00	4894	53	4947
14:00	5343	133	5476
15:00	5491	121	5612
15:30	5459	277	5736
16:00	5365	337	5702
17:00	5288	109	5397
18:00	5112	65	5177
19:00	4786	0	4786
20:00	4879	0	4879
21:00	4945	0	4945
22:00	5180	1	5181
23:00	5303	95	5398
24:00	5266	55	5321
Total	116.735	1.609	118.344



12 LOAD PATTERN OF DELHI ON THE DAY OF MAXIMUM ENERGY CONSUMED DURING JUNE 2014 – 20.06.2014 – 116.735Mus All figures in MW

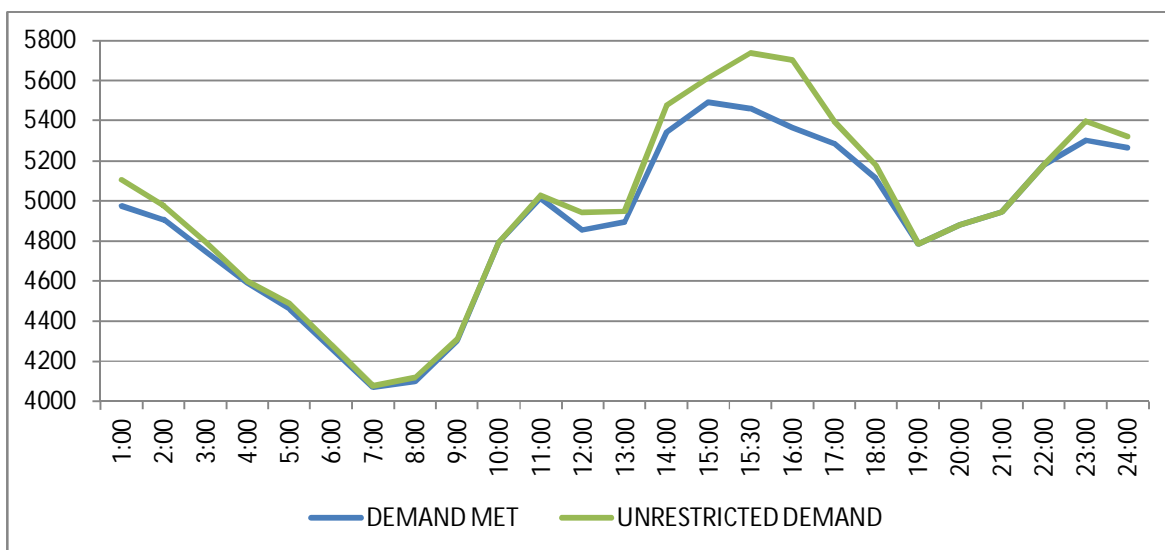
Hrs.	Demand	Load Shedding	Un-Restricted Demand
1:00	4973	133	5106
2:00	4906	71	4977
3:00	4750	45	4795
4:00	4590	10	4600
5:00	4460	27	4487
6:00	4263	19	4282
7:00	4072	5	4077
8:00	4099	19	4118
9:00	4303	7	4310
10:00	4795	0	4795
11:00	5013	15	5028
12:00	4855	86	4941
13:00	4894	53	4947
14:00	5343	133	5476
15:00	5491	121	5612
15:30	5459	277	5736
16:00	5365	337	5702
17:00	5288	109	5397
18:00	5112	65	5177
19:00	4786	0	4786
20:00	4879	0	4879
21:00	4945	0	4945
22:00	5180	1	5181
23:00	5303	95	5398
24:00	5266	55	5321
Total	116.735	1.609	118.344



13 LOAD PATTERN OF DELHI ON THE DAY OF MAXIMUM UNRESTRICTED ENERGY DEMAND DURING JUNE 2014 – 20.06.2014 – 118.344 Mus

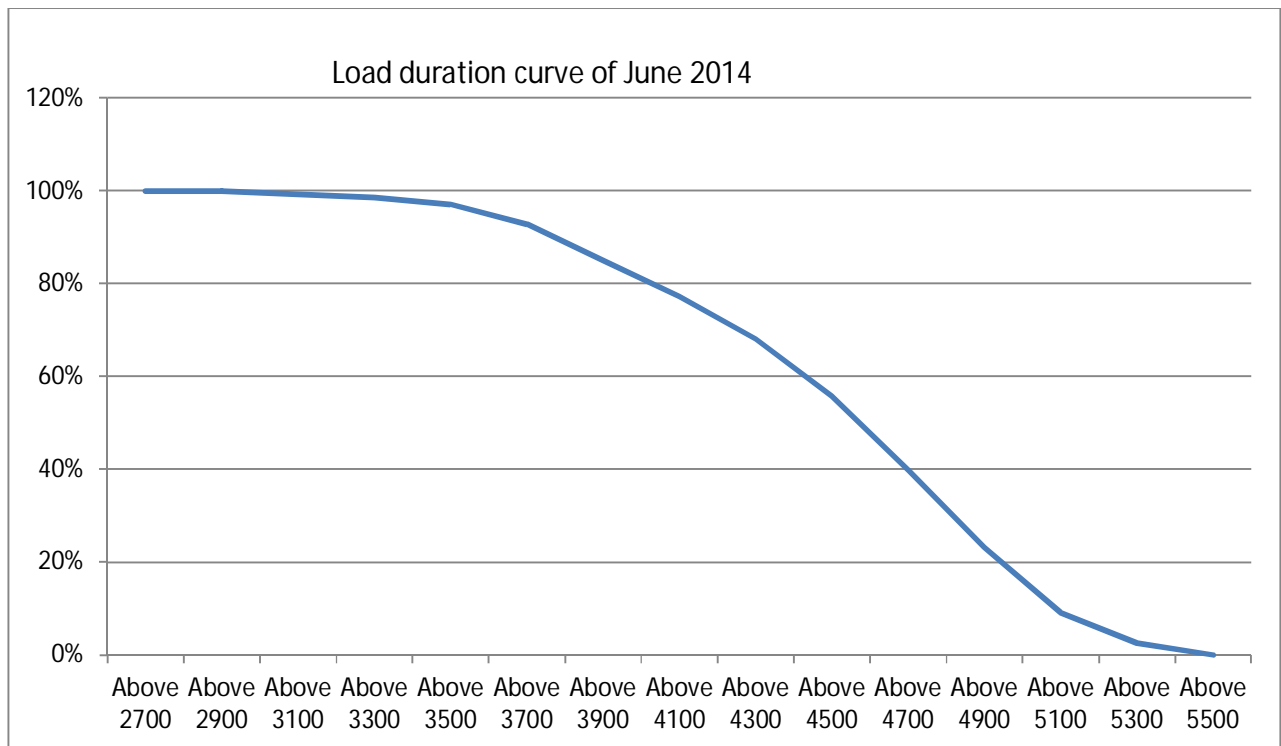
All figures in MW

Hrs.	Demand	Load Shedding	Un-Restricted Demand
1:00	4973	133	5106
2:00	4906	71	4977
3:00	4750	45	4795
4:00	4590	10	4600
5:00	4460	27	4487
6:00	4263	19	4282
7:00	4072	5	4077
8:00	4099	19	4118
9:00	4303	7	4310
10:00	4795	0	4795
11:00	5013	15	5028
12:00	4855	86	4941
13:00	4894	53	4947
14:00	5343	133	5476
15:00	5491	121	5612
15:30	5459	277	5736
16:00	5365	337	5702
17:00	5288	109	5397
18:00	5112	65	5177
19:00	4786	0	4786
20:00	4879	0	4879
21:00	4945	0	4945
22:00	5180	1	5181
23:00	5303	95	5398
24:00	5266	55	5321
Total	116.735	1.609	118.344



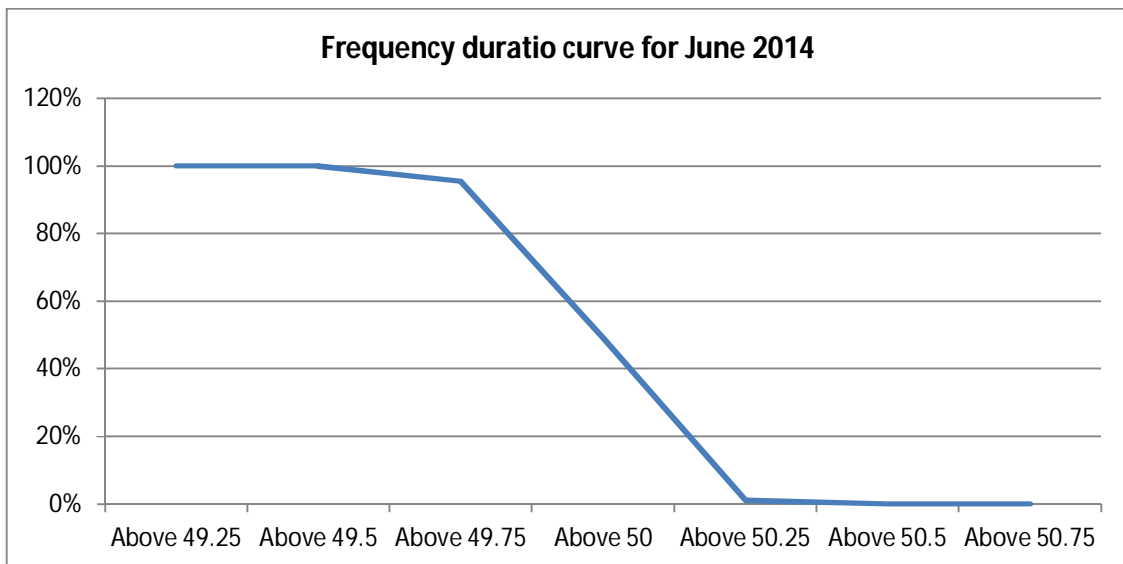
14 LOAD DURATION CURVE FOR JUNE 2014

Load in MW	Percentage of Time
Above 2700	100 %
Above 2900	99.95 %
Above 3100	99.23 %
Above 3300	98.57 %
Above 3500	97.06 %
Above 3700	92.76 %
Above 3900	84.97 %
Above 4100	77.24 %
Above 4300	68.1 %
Above 4500	55.81 %
Above 4700	39.79 %
Above 4900	23.26 %
Above 5100	9.08 %
Above 5300	2.54 %
Above 5500	0.04 %



FREQUENCY ANALYSIS FOR THE MONTH OF JUNE 2014

Frequency Range in Hz.	Percentage of time
Above 49.25	100 %
Above 49.5	99.96 %
Above 49.75	95.47 %
Above 50	49.14 %
Above 50.25	1.2 %
Above 50.5	0.02 %
Above 50.75	0 %



16 VOLTAGE PROFILE OF 220 KV SUB-STATIONS IN DELHI DURING JUNE 2014

All figures in kV

Date	NARELA		GAZIPUR	
	Max	Min	Max	Min
01-Jun-14	224.92	207.51	227.37	212.03
02-Jun-14	219.76	204.93	225.31	210.87
03-Jun-14	221.18	207.38	226.08	--
04-Jun-14	220.92	207.25	227.50	213.70
05-Jun-14	218.99	201.58	224.92	206.35
06-Jun-14	219.51	203.77	223.12	209.96
07-Jun-14	219.12	205.45	224.79	--
08-Jun-14	219.12	206.87	216.54	197.84
09-Jun-14	217.57	207.25	219.25	198.87
10-Jun-14	219.25	208.03	217.96	197.19
11-Jun-14	219.64	207.51	214.09	199.26
12-Jun-14	220.28	207.90	222.86	202.35
13-Jun-14	--	--	--	--
14-Jun-14	224.28	208.54	224.28	198.61
15-Jun-14	--	--	--	--
16-Jun-14	220.28	206.61	213.19	191.78
17-Jun-14	219.76	211.90	215.64	197.71
18-Jun-14	220.54	208.16	212.67	195.65
19-Jun-14	219.89	207.64	213.96	197.19
20-Jun-14	220.15	208.67	220.54	--
21-Jun-14	221.18	209.32	220.15	206.87
22-Jun-14	222.21	209.19	223.76	209.45
23-Jun-14	224.66	202.22	224.15	209.19
24-Jun-14	222.99	208.67	225.05	209.96
25-Jun-14	224.41	210.74	227.24	211.25
26-Jun-14	223.76	210.74	226.34	211.12
27-Jun-14	222.21	209.96	223.38	209.45
28-Jun-14	222.09	211.51	222.47	210.22
29-Jun-14	224.15	211.51	226.21	212.41
30-Jun-14	222.86	208.54	224.41	208.03

17 VOLTAGE PROFILE OF 400 KV SUB-STATIONS IN DELHI DURING JUNE 2014

All figures in kV

Date	400kV Bamnauli Grid Sub-Station				
	Max KV	Max Time	Min KV	Min Time	Average KV
01-Jun-14	415.98	08.03.23	390.19	15.48.02	402.29
02-Jun-14	406.84	07.03.24	385.74	14.11.37	397.33
03-Jun-14	406.61	06.05.18	386.67	15.14.53	396.10
04-Jun-14	408.01	06.18.18	383.39	16.18.57	394.53
05-Jun-14	404.03	07.01.21	378.70	14.42.40	392.22
06-Jun-14	403.32	07.04.14	381.05	23.16.19	391.64
07-Jun-14	405.20	06.03.22	382.22	14.48.21	392.58
08-Jun-14	407.54	18.36.19	384.09	00.08.39	396.38
09-Jun-14	402.62	18.20.08	386.67	22.15.59	394.30
10-Jun-14	405.20	19.00.00	385.74	22.37.41	394.74
11-Jun-14	403.09	06.07.04	383.39	22.17.49	393.94
12-Jun-14	408.48	15.57.05	387.61	14.33.43	397.06
13-Jun-14	--	--	--	--	--
14-Jun-14	413.17	08.01.46	385.74	22.53.44	398.65
15-Jun-14	--	--	--	--	--
16-Jun-14	405.67	00.00.09	384.56	14.17.50	392.52
17-Jun-14	405.20	06.08.57	381.75	15.00.52	394.77
18-Jun-14	403.32	06.06.05	380.81	15.48.20	394.42
19-Jun-14	403.79	07.01.55	381.51	14.40.47	395.47
20-Jun-14	404.26	18.59.20	382.92	15.51.50	394.70
21-Jun-14	406.37	06.06.00	381.05	13.54.39	395.58
22-Jun-14	407.78	--	384.09	22.48.13	398.32
23-Jun-14	411.53	07.59.49	378.47	15.51.46	394.11
24-Jun-14	408.48	08.01.19	380.81	15.08.31	396.16
25-Jun-14	412.70	--	385.50	15.54.43	398.54
26-Jun-14	411.30	04.25.34	387.38	22.09.26	398.64
27-Jun-14	406.14	06.04.04	382.92	14.48.39	393.09
28-Jun-14	405.43	18.02.06	383.86	13.43.19	394.25
29-Jun-14	410.36	08.45.47	386.91	15.19.32	400.22
30-Jun-14	408.72	06.32.02	380.81	15.14.10	392.25

All figures in kV

Date	400kV Bawana Grid Sub-Station				
	Max KV	Max Time	Min KV	Min Time	Average KV
01-Jun-14	414.81	06.03.36	388.78	00.09.56	402.71
02-Jun-14	405.43	07.03.34	386.67	14.11.37	397.34
03-Jun-14	406.37	06.05.08	387.85	15.14.13	396.66
04-Jun-14	407.78	06.18.08	384.56	16.27.07	395.73
05-Jun-14	403.32	07.01.21	381.51	14.44.20	393.59
06-Jun-14	402.85	06.03.41	--	--	392.78
07-Jun-14	403.09	06.03.02	384.56	00.05.32	393.46
08-Jun-14	405.43	18.35.39	385.50	00.08.49	395.26
09-Jun-14	401.68	07.03.34	387.61	22.13.29	394.48
10-Jun-14	403.79	19.00.40	--	--	395.61
11-Jun-14	401.68	19.01.44	--	--	395.86
12-Jun-14	406.84	04.05.07	392.07	13.47.08	398.44
13-Jun-14	--	--	--	--	--
14-Jun-14	414.34	08.01.06	392.30	22.14.51	400.82
15-Jun-14	--	--	--	--	--
16-Jun-14	407.31	08.02.50	388.55	14.44.11	397.10
17-Jun-14	407.78	18.33.33	390.89	14.57.51	400.25
18-Jun-14	408.72	07.13.58	390.19	15.48.10	401.08
19-Jun-14	407.54	07.02.45	390.89	14.32.37	400.50
20-Jun-14	408.95	18.59.30	390.19	14.30.09	399.60
21-Jun-14	409.18	06.06.51	389.25	14.47.43	400.83
22-Jun-14	411.30	--	391.13	15.14.12	402.58
23-Jun-14	414.81	07.59.49	386.44	14.48.00	399.29
24-Jun-14	410.83	08.04.39	387.85	15.08.51	400.62
25-Jun-14	415.05	--	392.07	14.34.18	401.97
26-Jun-14	413.87	04.25.24	394.41	15.03.26	404.11
27-Jun-14	410.12	06.02.54	392.07	15.15.41	401.09
28-Jun-14	411.30	18.01.56	393.24	13.43.19	401.78
29-Jun-14	415.75	06.35.40	395.58	15.19.32	406.29
30-Jun-14	413.41	06.52.33	389.72	15.14.20	398.52

18 DETAILS OF LUMPED CAPACITORS AT NEAREST 220 KV SUBSTATION

Sl. No	SUB-STATION	INSTALLED CAPACITY			
		66KV	33kV	11kV	TOTAL
1	IP YARD		30		30
1	Kamla Market			16.35	16.35
2	Minto Road				0
3	GB Pant Hosp			15.88	15.88
4	Delhi Gate			10.9	10.9
5	Tilakmarg			5.04	5.04
7	Cannaught Place			10.08	10.08
8	Kilokri		10.08	10.48	20.56
9	NDSE				0
11	Nizamuddin				0
12	Exhibition-I				0
13	Exhibition-II				0
14	Defence Colony				0
15	IG Stadium		10.08	5.45	15.53
16	Lajpat Nagar				0
17	IP Estate			10.9	10.9
	LT BYPL				5.6
		0	50.16	85.08	140.84
2	Electric Lane				
1	Electric Lane			5.04	5.04
2	Scindia House			5.04	5.04
3	Raisina Road			10.08	10.08
4	Raja Bazar			10.08	10.08
	LT NDMC				12
		0	0	30.24	42.24
3	RPH Station		20		20
1	Lahori Gate			10.49	10.49
2	Jama Masjid			10.48	10.48
4	Kamla Market				0
5	Minto Road			10.9	10.9
6	GB Pant Hosp				0
7	IG Stadium				0
	LT BYPL				3
		0	20	31.87	54.87
4	Parkstreet S/stn	20	20		40
1	Shastri Park		10.896	5.45	16.346
2	Faiz Road			18.05	18.05
3	Motia Khan			16.3	16.3
4	Prasad Nagar			16.25	16.25
5	Anand Parbat			10.8	10.8
6	Shankar Road			5.04	5.04
7	Rama Road			0	0
8	Baird Road			10.08	10.08
9	Hanuman Road			5.04	5.04
10	Pusa			5.44	5.44
11	Ridge Valley			0	0
12	B. D. Marg			0	0
13	Nirman Bhawan			5.04	5.04
	LT BYPL			0	30.1
		20.00	30.90	97.49	178.486
5	Naraina S/stn		20	5.04	25.04
1	DMS			10.85	10.85
2	Mayapuri		10.87	10.4	21.27
3	Inderpuri		10	4.8	14.8
4	Rewari line				0
5	Khyber Lane		10.05		10.05
6	Kirbi Place		10.05		10.05
7	Payal			7.2	7.2
8	Saraswati Garden			10.88	10.88
		0	60.97	49.17	110.14

Sl. No	SUB-STATION	INSTALLED CAPACITY			
		66KV	33kV	11kV	TOTAL
6	Mehrauli S/stn	80		5.04	85.04
1	Adchini			14.61	14.61
2	Andheria Bagh			10.85	10.85
3	IIT			10.9	10.9
4	JNU		10.03	10.03	20.06
5	Bijwasan			15.47	15.47
6	DC Saket			9.98	9.98
7	Malviya Nagar				0
8	C Dot			10.48	10.48
9	Vasant kunj B-Blk	21.79		10.9	32.69
10	Vasant kunj C-Blk	20.16		10.48	30.64
11	Palam				0
12	IGNOU			5.04	5.04
13	R. K. Puram-I			10.07	10.07
14	Vasant Vihar			19.25	19.25
15	Pusp Vihar			10.44	10.44
16	Bhikaji Cama Place		10.08	10.07	20.15
	LT BRPL				25
		121.95	20.11	163.61	330.67
7	Vasantkunj S/stn	40		5.04	45.04
1	R. K. Puram-II			10.08	10.08
2	Vasant kunj C-Blk				0
3	Vasant kunj D-Blk			9.63	9.63
4	Ridge Valley				0
	LT BRPL				33.2
		40	0	24.75	97.95
8	Okhla S/stn	60	10	5.04	75.04
1	Balaji			10.8	10.8
2	East of Kailash			15.89	15.89
3	Alaknanda			16.3	16.3
4	Malviya Nagar	21.79		10.85	32.64
5	Masjid Moth			16.3	16.3
6	Nehru Place			21.34	21.34
7	Okhla Ph-I	21.79		16.3	38.09
8	Okhla Ph-II		20.93	15.47	36.4
9	Shivalik			10.8	10.8
10	Batra			15.9	15.9
11	VSNL			10.9	10.9
12	Siri Fort			10.49	10.49
13	Tuglakabad			10.85	10.85
	LT BRPL				59
		103.58	30.93	187.23	380.74
9	Lodhi Road S/stn		20		20
1	Defence Colony		14.85		14.85
2	Hudco		10.9		10.9
3	Lajpat Nagar		10.9		10.9
4	Nizamuddin		10.44		10.44
5	Vidyut Bhawan				0
6	Ex. Gr. II				0
7	IHC				0
	LT BRPL				42
		0	67.09	0	109.09
10	Sarita Vihar S/stn	20		5.04	25.04
1	Sarita Vihar			10.07	10.07
2	MCIE			10.06	10.06
3	Mathura Road	20.16		11.69	31.85
4	Jamia Millia			10.89	10.89
5	Sarai Julena		10.08	16.29	26.37
6	Jasola			5.44	5.44
	LT BRPL				23.6
		40.16	10.08	69.48	143.32

Sl. No	SUB-STATION	INSTALLED CAPACITY			
--------	-------------	--------------------	--	--	--

		66KV	33kV	11kV	TOTAL
11	Wazirabad				
1	Bhagirathi		14.4	10.9	25.3
2	Ghonda	21.79	22.56	15.94	60.29
3	Seelam Pur		10.08	21.39	31.47
4	Dwarkapuri			15.46	15.46
5	Nandnagri	20.16		16.35	36.51
6	Yamuna Vihar			16.2	16.2
7	East of Loni Road			10.8	10.8
8	Shastri Park			10.9	10.9
9	Karawal Nagar			5.4	5.4
10	Sonia Vihar			7.2	7.2
	LT BYPL				10
		41.95	47.04	130.54	229.53
12	Geeta Colony				
1	Geeta Colony				0
2	Kanti Nagar			10.49	10.49
3	Kailash Nagar			10.9	10.9
4	Seelam Pur			15.48	15.48
5	Shakar Pur				0
	LT BYPL				5.8
		0	0	36.87	42.67
13	Gazipur S/stn	40		5.04	45.04
1	Dallupura	28.8		10.9	39.7
2	Vivek Vihar			9.57	9.57
3	GT Road			10.85	10.85
4	Kondli	20.16		10.85	31.01
5	MVR-I			10.9	10.9
6	MVR-II	20.16		10.9	31.06
7	PPG Ind. Area			10.06	10.06
	LT BYPL				20.6
		109.12	0	79.07	208.79
14	Patparganj S/stn	40	20	5.04	65.04
1	GH-I	19.89		10.45	30.34
2	GH-II	20.09		10.9	30.99
3	CBD		10.03	15.48	25.51
4	Guru Angad Nagar			15.49	15.49
5	Karkadooma		10.8	10.44	21.24
6	Preet Vihar			10.07	10.07
7	CBD-II			10.8	10.8
8	Shakarpur			10.8	10.8
9	Jhilmil			10.8	10.8
10	Dilshad Garden	20.16		16.35	36.51
11	Khichripur	21.79		10.49	32.28
12	Mother Dairy				0
13	Scope Building				0
14	Vivek Vihar				0
15	Akhardham			14.6	14.6
	LT BYPL				23.3
		121.93	40.83	151.71	337.77
15	Najafgarh S/stn	60		5.04	65.04
1	A4 Paschim Vihar			10.8	10.8
2	Nangloi	21.73		15.84	37.57
3	Nangloi W/W	20.89		10.85	31.74
4	Pankha Road			15.88	15.88
5	Jaffarpur			15.43	15.43
7	Inst. Area Janakpuri			17.6	17.6
8	Paschimpuri		10.05	15.47	25.52
9	Paschim Vihar	41.83		15.43	57.26
10	Mukherjee Park			20.83	20.83
11	Udyog Nagar			10.43	10.43
12	Choukhandi			10.07	10.07
	LT BRPL				27
		144.45	10.05	163.67	345.17

Sl. No	SUB-STATION	INSTALLED CAPACITY			
		66KV	33kV	11kV	TOTAL
16	Pappankalan-I S/stn	20		5.04	25.04
1	Bindapur Grid G-3 PPK	21.73		15.85	37.58
2	Bodella-I	20.1		16.24	36.34
3	Bodella-II	21.73		17.64	39.37
4	DC Janakpuri			10.03	10.03
5	G-2 PPK			10.8	10.8
6	G-5 PPK			15.51	15.51
7	G-6 PPK			5.4	5.4
8	G-15 PPK			10.8	10.8
9	Harinagar	21.18		16.25	37.43
10	Rewari line			5.44	5.44
	LT BRPL				13.5
		104.74	0	129	247.24
17	BBMB Rohtak Road				
1	S.B. Mill			10.07	10.07
2	Rama Road			10.88	10.88
3	Ram Pura			10.48	10.48
4	Rohtak Road			8.04	8.04
5	Vishal			10.4	10.4
6	Tri Nagar			5.44	5.44
7	Madipur			10.43	10.43
8	Sudershan Park			10.08	10.08
9	Kirti Nagar			5.44	5.44
		0	0	81.26	81.26
18	Shalimarbagh S/stn		40	6	46
1	S.G.T. Nagar			5.44	5.44
2	Wazirpur-1			17.18	17.18
3	Wazirpur-2			11.39	11.39
4	Ashok Vihar			5.44	5.44
5	Rani Bagh			10.88	10.88
6	Haiderpur			11.39	11.39
7	SMB FC			5.44	5.44
8	SMB KHOSLA			5.44	5.44
	LT TPDDL				30
		0	40	78.6	148.6
19	Subzimandi S/stn			6	6
1	Shakti Nagar			5.94	5.94
2	Gulabibagh			10.88	10.88
3	Shahzadabagh			13.68	13.68
4	DU			5.44	5.44
5	Tripolia			10.88	10.88
	B. G. Road			5.4	5.4
	LT BYPL				0.9
	LT TPDDL				20
		0	0	58.22	79.12
20	Narela S/stn	40		5.04	45.04
1	A-7 Narela			10.88	10.88
2	AIR Kham pur			6	6
3	Ashok vihar			10.48	10.48
4	Azad Pur			5.44	5.44
5	Tri Nagar			5.44	5.44
6	Badli	20		5.95	25.95
7	DSIDC Narela-1			5.95	5.95
8	GTK			5.44	5.44
9	Jahangirpuri	20	10	0	30
10	Bhalswa			3.6	3.6
	LT TPDDL				10
		80	10	64.22	164.22

Sl. No	SUB-STATION	INSTALLED CAPACITY			
		66KV	33kV	11kV	TOTAL
21	Gopalpur S/stn		30	5.04	35.04
1	Azad Pur			10.88	10.88
2	Hudson Lane			5.44	5.44
3	Wazirabad			2.4	2.4
4	Indra Vihar			5.44	5.44
6	GTK Road			5.94	5.94
7	Jahangirpuri		10	5.95	15.95
8	Civil lines			5.44	5.44
9	Pitam Pura-1			5.44	5.44
10	Pitam Pura-3			5.44	5.44
11	Air Khampur			5.95	5.95
12	SGT Nagar			5.95	5.95
13	Tiggipur			10.88	10.88
	LT TPDDL				29
		0	40	80.19	149.19
22	Rohini S/stn	40		6	46
1	Rohini Sec-22			10.88	10.88
2	Rohini Sec-23	20		5.44	25.44
3	Rohini Sec-24			5.44	5.44
4	Rohini-1			5.44	5.44
5	Rohini-3			5.95	5.95
6	Rohini-4			11.39	11.39
7	Rohini-5			11.39	11.39
8	Rohini-6			5.95	5.95
9	Mangolpuri-1			16.83	16.83
10	Mangolpuri-2	20		5.94	25.94
11	Pitam Pura-1	20		5.04	25.04
12	Pitam Pura-2			10.48	10.48
13	Rohini DC-1			14.4	14.4
	LT TPDDL				30
		100	0	120.57	250.57
23	Kanjhawala S/stn	20		5.04	25.04
1	Bawana Clear Water			10.88	10.88
2	Pooth Khoord			5.44	5.44
		20	0	21.36	41.36
24	BAWANA S/stn				
1	Bawana S/stn No. 6			10.88	10.88
2	Bawana S/stn No. 7				0
		0	0	10.88	10.88
25	Kashmeregate S/stn			5.04	5.04
1	Civil lines			5.44	5.44
2	Town Hall			8.64	8.64
3	Fountain			5.45	5.45
	LT BYPL				2.7
		0	0	24.57	27.27
26	Pappankalan-II				
1	DMRC-I				0
2	DMRC-II				0
27	Trauma Center (AIIMS)				
1	AIIMS		13.26	5.04	18.3
2	Trauma Center			10.08	10.08
3	Netaji Nagar			15.12	15.12
4	Sanjay Camp			10.08	10.08
5	Kidwai Nagar			5.04	5.04
6	SJ Airport			5.04	5.04
	Race Course			5.04	5.04
		0	13.26	55.44	68.7

Sl. No	SUB-STATION	INSTALLED CAPACITY			
		66KV	33kV	11kV	TOTAL
28	MUNDKA				
	Rohini-2			11.39	11.39
	LT BRPL				18.5
		0	0	11.39	29.89
29	DSIDC BAWANA				
	DSIDC NRL-1	20			20
	DSIDC NRL-2			10.88	10.88
		20	0	10.88	30.88
30	RIDGE VALLEY				
	Keventry Diary			10.08	10.08
	Nehru Park			5.04	5.04
	Bapu Dham			10.08	10.08
		0	0	25.2	25.2
31	IP EXTN (PRAGATI)				
	Vidyut Bhawan			10.08	10.08
	Dalhousie Road			5.04	5.04
	School Lane			5.04	5.04
	LT NDMC				12.29
		0	0	20.16	32.45
	TOTAL CAPACITY	1067.9	491.4	2092.7	4139

Utility	HT	LT	Total
BYPL	864	102	966
TPDDL	657	119	776
NDMC	180	24	204
DTL	754	0	754
BRPL	1158	242	1400
RPH	20	0	20
MES	20	0	20
TOTAL	3652	487	4139

20 DETAILS OF BREAK-DOWNS DURING THE MONTH OF JUNE 2014

SL NO	OCCURRENCE OF BREAK-DOWN		DETAILS OF THE BREAKDOWN	TIME OF RESTORATION		REMARKS
	DATE	TIME		DATE	TIME	
01	01-06-14	02:17	220kV BAMNAULI-NAJAFGARH CKT-I	01-06-14	02:25	AT NJF CKT TRIPPED 186. NO TRIPPING AT BAMNAULI.
02	01-06-14	02:17	220kV BAMNAULI-NAJAFGARH CKT-II	01-06-14	02:25	AT NJF CKT TRIPPED 186. NO TRIPPING AT BAMNAULI.
03	01-06-14	02:17	NAJAFGARH 220/66kV 100MVA Tx-II	01-06-14	03:10	87T, DIFFERENTIAL, 186 RELAY APPEARED ON TX BUT IT DID NOT TRIP. 66KV I/C-2 TRIPPED.
04	01-06-14	02:28	400kV Ballabgarh-Bamnauli Ckt-I	01-06-14	02:48	AT BAMNAULI CKT TRIPPED ON D/P,A-N-PH,Z-1,186A&B.
05	01-06-14	04:10	ROHINI-II 220/66kV 160MVA Tx-I	01-06-14	07:09	TX TRIPPED ON 86B. 66KV I/C-2 TRIPPED WITH HEAVY JERK.
06	02-06-14	01:45	220kV BAMNAULI-PAPPANKALAN-II CKT-I	02-06-14	02:06	AT BAMNAULI CKT. TRIPPED ON 186 A&B 86, NO TRIPPING AT PAPANALAN-I (TOWER OF 220KV BAMNAULI - PAPANALAN -I CKT. -II WAS DAMAGED IN STORM ON 30.05.2014 WAS TEMPORARILY CHARGED THROUGH 220KV BAMNAULI - PAPANALAN-II CKT. -I BY MAKING T-OFF ARRANGEMENTS AT TOWER NO 23)
07	02-06-14	02:37	220kV BAMNAULI-PAPPANKALAN-II CKT-I	02-06-14	02:55	AT BAMNAULI CKT TRIPPED ON O/C, 67B, BACKUP TRIP 186 A&B,86. NO TRIPPING AT PPK-1. (TOWER OF 220KV BAMNAULI-PAPPANKALAN-1 CKT-II WAS DAMAGED IN STORM ON 30.5.2014 WAS TEMPORARILY CHARGED THROUGH 220KV BAMNAULI-PAPPANKALAN-2 CKT-I BY MAKING T-OFF ARRANGEMENTS AT TOWER NO-23.)
08	02-06-14	02:45	220kV BAMNAULI-PAPPANKALAN-II CKT-I	02-06-14	02:55	AT BAMNAULI CKT. TRIPPED ON 186 A&B 86, NO TRIPPING AT PAPANALAN-I (TOWER OF 220KV BAMNAULI - PAPANALAN -I CKT. -II WAS DAMAGED IN STORM ON 30.05.2014 WAS TEMPORARILY CHARGED THROUGH 220KV BAMNAULI - PAPANALAN-II CKT. -I BY MAKING T-OFF ARRANGEMENTS AT TOWER NO 23)
09	02-06-14	09:10	220kV GEETA COLONY- PATPARGANJ CKT-I	02-06-14	10:17	AT PPG CKT TRIPPED ON E/F. NO TRIPPING AT GEETA COLAONY.
10	02-06-14	09:10	220 KV PATPARGANJ - I.P. CKT-I	02-06-14	09:19	AT PPG CKT TRIPPED ON E/F. NO TRIPPING AT IP.
11	02-06-14	09:10	GEETA COLONY 220/33kV 100MVA Tx-I	02-06-14	09:17	TX TRIPPED ON E/F,86,30E AND 33KV I/C-1 TRIPPED ON 30E,86.,
12	02-06-14	09:17	GEETA COLONY 220/33kV 100MVA Tx-I	02-06-14	09:35	TX TRIPPED ON E/F,86,30E AND 33KV I/C-1 TRIPPED ON 30E,86.
13	02-06-14	09:35	GEETA COLONY 220/33kV 100MVA Tx-I	02-06-14	10:17	TX TRIPPED ON E/F,86,30E AND 33KV I/C-1 TRIPPED ON 30E,86.,
14	02-06-14	14:37	220kV BAMNAULI-PAPPANKALAN-II CKT-I	02-06-14	14:39	AT BAMNAULI CKT. TRIPPED ON 186 A&B 86, NO TRIPPING AT PAPANALAN-I (TOWER OF 220KV BAMNAULI - PAPANALAN -I CKT. -II WAS DAMAGED IN STORM ON 30.05.2014 WAS TEMPORARILY CHARGED THROUGH 220KV BAMNAULI - PAPANALAN-II CKT. -I BY MAKING T-OFF ARRANGEMENTS AT TOWER NO 23)
15	02-06-14	14:37	220kV BAMNAULI-PAPPANKALAN-II CKT-II	02-06-14	14:39	AT BAMNAULI CKT TRIPPED ON 186 A&B,86. NO TRIPPING AT PPK-2.
16	02-06-14	14:46	220kV BAMNAULI-PAPPANKALAN-II CKT-I	02-06-14	16:35	AT BAMNAULI CKT. TRIPPED ON 186 A&B 86, NO TRIPPING AT PAPANALAN-I (TOWER OF 220KV BAMNAULI - PAPANALAN -I CKT. -II WAS DAMAGED IN STORM ON 30.05.2014 WAS TEMPORARILY CHARGED THROUGH 220KV BAMNAULI - PAPANALAN-II CKT. -I BY MAKING T-OFF ARRANGEMENTS AT TOWER NO 23)
17	02-06-14	14:46	220kV BAMNAULI-PAPPANKALAN-II CKT-II	02-06-14	14:57	AT BAMNAULI CKT TRIPPED ON 186 A&B. NO TRIPPING AT PPK-2.
18	02-06-14	17:00	INDRAPRASTHA POWER 33kV KAMLA MARKET CKT (BAY-30)	02-06-14	22:05	CKT TRIPPED ON O/C, R AND Y-PH. FIRE REPORTED IN CONTROL CABLE TRENCH.
19	02-06-14	17:20	220kV BAMNAULI-PAPPANKALAN-II CKT-I	02-06-14	17:35	AT BAMNAULI CKT TRIPPED ON 186 A&B, BACKUP PROTECTION, BU-86. NO TRIPPING AT PPK-1. (TOWER OF 220KV BAMNAULI-PAPPANKALAN-1 CKT-II WAS DAMAGED IN STORM ON 30.5.2014 WAS TEMPORARILY CHARGED THROUGH 220KV BAMNAULI-PAPPANKALAN-2 CKT-I BY MAKING T-OFF ARRANGEMENTS AT TOWER NO-23.)
20	02-06-14	17:53	220kV BAMNAULI-PAPPANKALAN-II CKT-I	02-06-14	18:12	AT BAMNAULI CKT. TRIPPED ON 186 A&B 86, NO TRIPPING AT PAPANALAN-I (TOWER OF 220KV BAMNAULI - PAPANALAN -I CKT. -II WAS DAMAGED IN STORM ON 30.05.2014 WAS TEMPORARILY CHARGED THROUGH 220KV BAMNAULI - PAPANALAN-II CKT. -I BY MAKING T-OFF ARRANGEMENTS AT TOWER NO 23)

21	02-06-14	21:43	220KV BAMNAULI-PAPPANKALAN-II CKT-I	02-06-14	21:52	AT BAMNAULI CKT. TRIPPED ON 186 A&B 86, NO TRIPPINT AT PAPANALAN-I (TOWER OF 220KV BAMNAULI - PAPANALAN -I CKT. -II WAS DAMAGED IN STORM ON 30.05.2014 WAS TEMPORARILY CHARGED THROUGH 220KV BAMNAULI - PAPANALAN-II CKT. -I BY MAKING T-OFF ARRANGEMENTS AT TOWER NO 23)
22	02-06-14	22:40	220KV BAMNAULI-PAPPANKALAN-II CKT-I	02-06-14	22:45	AT BAMNAULI CKT. TRIPPED ON 186 A&B 86, NO TRIPPINT AT PAPANALAN-I (TOWER OF 220KV BAMNAULI - PAPANALAN -I CKT. -II WAS DAMAGED IN STORM ON 30.05.2014 WAS TEMPORARILY CHARGED THROUGH 220KV BAMNAULI - PAPANALAN-II CKT. -I BY MAKING T-OFF ARRANGEMENTS AT TOWER NO 23)
23	03-06-14	06:24	BAWANA 400/220kv 315MVA ICT-VI	16-06-14	15:21	ICT TRIPPED ON DIFFERENTIAL PROT, R PHASE LA DAMAGED OF 220KV SIDE, R PHASE BUSHING ALSO DAMAGED OF 220KV SIDE. ICT CHARGED ON NO LOAD ON 15.06.2014 AT 20.18HRS. LOAD TAKEN AT 15.21HRS. ON 16.06.2014.
24	03-06-14	13:52	MASJID MOTH 220/33kv 100MVA Tx-II	11-06-14	05:40	TX TRIPPED ON WINDING TEMP.INDICATION,OIL TEMP.TRIP, 86. CHARGE ON NO LOAD ON 10.6.14 AT 17:45 HRS. & LOAD TAKEN ON 11.06.14 AT 05:40 HRS.
25	04-06-14	06:45	OKHLA 220/33kv 100MVA Tx-IV	04-06-14	07:25	TX TRIPPED ON DIFFERENTIAL,86.
26	05-06-14	13:01	220KV GOPALPUR- MANDOLACKT-II	05-06-14	13:08	AT GOPALPUR DIST PROT, RYB, 7.5KMS AT MANDOLA DIST PROT, B PHASE ZONE-II
27	05-06-14	13:22	220KV MAHARANI BAGH - SARITA VIHAR CKT	05-06-14	13:34	AT SARITA VIHAR DIST PROT, ZONE-I, DISTANCE 980MTS AT MAHARANI BAGH NO TRIPPING AT PRAGATI SARITA VIHAR CKT.TRIPPED ON DIST PROT, ZONE-II, Y&B PHASE, 9.988KMS
28	05-06-14	13:49	220KV GAZIPUR - BTPS CKT	05-06-14	14:48	AT GAZIPUR DIST PROT ZONE-I, HEAVY DUTY RELAY AT BTPS E/F, R PHASE ZONE-I, DISTANCE 14.1KMS
29	05-06-14	14:17	220KV MAHARANI BAGH - SARITA VIHAR CKT	05-06-14	14:26	AT SARITA VIHAR DIST PROT, ZONE-I, ABC, DISTANCE 5.395KMS AT MAHARANI BAGH DIST PROT, ZONE-I, ABC, DISTANCE 2.2KMS
30	05-06-14	14:50	220KV OKHLA - BTPS CKT. - II	05-06-14	14:55	AT BTPS TRIPPED ON ZONE-I, DIST PROT, AT OKHLA NO TRIPPING
31	05-06-14	14:50	220KV OKHLA - BTPS CKT. - I	05-06-14	15:35	AT OKHLA TRIPPED ON DIST PROT, ABC, DISTANCE 4.49KMS AT BTPS DIST PROT, B PHASE, ZONE-I, 0.8KMS
32	05-06-14	14:52	220KV BAWANA-DSIIDC BAWANA CKT-I	05-06-14	15:11	AT BAWANA DIST PROT , AR LOCKOUT AT DSIDC BAWANA DIST PROT, AR LOCKOUT ZONE-I
33	05-06-14	22:49	220KV BAMNAULI - DIAL CKT-II	05-06-14	23:08	AT BAMNAULI CKT TRIPPED ON DIST PROT, C PHASE, ZONE-1 AT DIAL TRIPPED ON DIST PROT, C PHASE, ZONE-1
34	06-06-14	12:44	220KV BAWANA-DSIIDC BAWANA CKT-I	06-06-14	18:44	AT BAWANA TRIPPED ON DIST PROT, ZONE-1, A&B PHASE, DISTANCE 1.6KMS, R PHASE CORONA RING DAMAGED, R&Y PHASE LINE ISOLATOR CLAMPS ALSO BECAME RED HOT. AT DSIDC BAWANA TRIPPED ON DIST PROT, AB&C,
35	06-06-14	14:32	220KV BAWANA-DSIIDC BAWANA CKT-II	06-06-14	16:45	AT BAWANA TRIPPED ON DIST PROT, B&C ZONE-I, FAULT LOCATION 1.10KMS AT DSIDC BAWANA NO TRIPPING
36	06-06-14	22:40	220KV GEETA COLONY- PATPARGANJ CKT -II	06-06-14	22:50	AT GEETA COLONY DIST PROT, ZONE-2, DISTANCE 5.3KMS. AT PATPARGANJ BUS BAR PROT, OPERATED.
37	06-06-14	22:40	220KV GEETA COLONY- PATPARGANJ CKT-I	06-06-14	22:50	AT PATPARGANJ BUS BAR PROT OPERATED AT GEETA COLONY NO TRIPPING
38	06-06-14	23:10	OKHLA 33kv ALAKNANDA CKT-II	07-06-14	06:49	AT OKHLA Y PHASE CT CAUGHT FIRE AND DAMAGED AT ALAKHNAND ONLY SUPPLY FAIL
39	07-06-14	05:39	220KV BAMNAULI-PAPPANKALAN-II CKT-II	07-06-14	05:55	AT BAMNAULI CKT TRIPPED ON O/C. NO TRIPPING AT PPK-2.
40	07-06-14	07:50	LODHI RD 220/33kv 100MVA Tx-II	07-06-14	08:10	TX TRIPPED ON 67AX,86B,86ABC,152-X,A/R.
41	07-06-14	07:50	LODHI RD 33kv EXHIBITION GROUND	07-06-14	15:10	CKT TRIPPED ON E/F. S/D AVAILED TO TEST CB .
42	07-06-14	07:50	LODHI RD 220/33kv 100MVA Tx-I	07-06-14	08:00	33KV I/C-1 TRIPPED ON O/C & E/F.
43	07-06-14	14:23	220KV BAMNAULI-PAPPANKALAN-II CKT-II	07-06-14	14:35	AT PPK-2 CKT TRIPPED ON D/P,Z-1,MAIN-1&2,A-N PHASE. AT BAMNAULI CKT TRIPPED ON D/P,A-PH,186A&B.
44	07-06-14	15:40	220KV BAMNAULI - DIAL CKT-II	07-06-14	16:02	AT BAMNAULI CKT TRIPPED ON D/P,B&C-PH,86A&B. AT DIAL CKT TRIPPED ON D/P,Z-1,Y&B-PH.
45	07-06-14	17:45	220KV GAZIPUR - BTPS CKT	20-06-14	13:27	AT GAZIPUR CKT TRIPPED ON D/P,Z-1. AT BTPS CKT TRIPPED ON R-PH E/F, D/P, DIST-10.6KM. R-PH CABLE DAMAGED.
46	08-06-14	12:53	220KV BAWANA-DSIIDC BAWANA CKT-I	08-06-14	13:15	AT BWN CKT TRIPPED ON D/P,Z-1,DIST-1.6KM, A,B&C-PH. AT DSIDC CKT TRIPPED ON D/P,A-PH.
47	08-06-14	12:53	220KV DSIDC BAWANA-NARELA CKT-I	08-06-14	13:21	AT NARELA CKT TRIPPED ON D/P,Z-2,A,B&C-PH. NO TRIPPING AT DSIDC BAWANA.
48	08-06-14	14:27	220KV BAWANA-DSIIDC BAWANA CKT-I	08-06-14	15:00	AT BWN CKT TRIPPED ON D/P,DIST-1.48KM. AT DSIDC CKT TRIPPED ON D/P,A-PH, A/R
49	08-06-14	14:32	220KV BAWANA-DSIIDC BAWANA CKT-II	08-06-14	15:03	AT BWN CKT TRIPPED ON D/P,Z-1.DIST-1.69KM. NO TRIPPING AT DSIDC.

50	08-06-14	16:10	PATPARGANJ 33kV CBD SHAHDARA CKT	08-06-14	16:36	CKT TRIPPED WITHOUT INDICATION.
51	08-06-14	16:10	PATPARGANJ 33kV PREET VIHAR CKT	08-06-14	19:10	CKT TRIPPED ON E/F. FIRE REPORTED AT CABLE END BOX.
52	08-06-14	16:10	PATPARGANJ 33kV KARKADOOA CKT-I	08-06-14	16:36	CKT TRIPPED WITHOUT INDICATION.
53	08-06-14	16:10	PATPARGANJ 33kV KARKADOOA CKT-II	08-06-14	20:32	CKT TRIPPED ON O/C & E/F. ALL PHASE LA FLASHED AND CONDUCTOR SNAPPED.
54	09-06-14	13:12	220kV MAHARANI BAGH - SARITA VIHAR CKT	09-06-14	13:26	AT MAHARANIBAGH CKT TRIPPED ON D/P, FAULT LOOP, DIST-4.8KM. AT SARITA VIHAR CKT TRIPPED ON D/P, Z-1, AUTO RECLOSE, A, B&C-PH.
55	09-06-14	15:02	MUNDKA 400/220kV 315MVA ICT-IV	09-06-14	15:21	ICT TRIPPED ON 86, TRIP SUPERVISION RELAY.
56	09-06-14	16:11	MUNDKA 400/220kV 315MVA ICT-IV	09-06-14	16:25	ICT TRIPPED ON 86, TRIP SUPERVISION RELAY.
57	09-06-14	22:25	PATPARGANJ 220/66kV 100MVA Tx-I	09-06-14	22:28	66KV I/C-1 TRIPPED ON O/C R & B-PH AND 66KV BUS COUPLER TRIPPED ON O/C R-PH.
58	10-06-14	01:55	OKHLA 66/11kV, 20MVA Tx-I	11-06-14	15:10	TX TRIPPED ON 80 SUPER VISION RELAY, TRIP COIL 95C, 87 DIFFERENTIAL. R AND B-PH HV SIDE CT DAMAGED AND CAUGHT FIRE. TX OIL SPILL IN TRENCH. CONTROL CABLE DAMAGED IN FIRE.
59	10-06-14	01:55	OKHLA 66/11kV, 20MVA Tx-II	10-06-14	13:45	TX TRIPPED ON HV 64R, 95C, 80. TX OIL FROM 20MVA TX-1 SPILL IN TRENCH AND CONTROL CABLE DAMAGED IN FIRE.
60	10-06-14	01:55	OKHLA 220/66kV 100MVA Tx-II	10-06-14	04:50	TX TRIPPED ON O/C AND 66KV I/C-1 TRIPPED ON O/C, E/F, 86.
61	10-06-14	01:55	OKHLA 220/66kV 100MVA Tx-I	10-06-14	05:05	TX TRIPPED ON O/C AND 66KV I/C-1 TRIPPED ON O/C, E/F, 86.
62	10-06-14	04:05	OKHLA 220/33kV 100MVA Tx-IV	10-06-14	04:10	TX TRIPPED ON DIFFERENTIAL, 86
63	10-06-14	04:30	OKHLA 220/33kV 100MVA Tx-IV	10-06-14	07:20	TX TRIPPED ON DIFFERENTIAL, 86.
64	10-06-14	22:42	PATPARGANJ 220/66kV 100MVA Tx-I	10-06-14	22:57	66KV I/C-1 TRIPPED ON 51AX, 51CX AND 66KV BUS COUPLER TRIPPED ON 51AX, 51CX.
65	10-06-14	23:07	PATPARGANJ 220/66kV 100MVA Tx-I	10-06-14	23:19	66KV I/C-1 TRIPPED ON 51AX, 51CX AND 66KV BUS COUPLER TRIPPED ON 51AX, 51CX.
66	11-06-14	11:33	400kV Bamnauli-Jhatikara Ckt-II	Contd.		E/M S/D AVAILED TO ATTEND HOT POINT AT Y&R-PH ISOLATOR AT BAMNAULI. WHILE CHARGING SMOKE APPEARED ON 400KV CABLE PORTION OF CKT.
67	11-06-14	18:16	400kV Bamnauli-Jhatikara Ckt-I	13.06.14	16:27	SMOKE APPEARED ON 400KV CABLE PORTION OF CKT-2 SO CKT-1 MADE OFF DUE TO SAFETY REASON.
68	12-06-14	15:30	220KV BAWANA- ROHINI CKT-I	12-06-14	16:33	AT ROHINI CKT. TRIPPED ON DIST PROT B PHASE, 186A, 186B, CVT AVAILABLE AT BAWANA NO TRIPPING, LATER BAWANA INFORMED THAT Y & Y POLE NOT TRIPPED BUT B POLE TRIPPED MANUALLY
69	12-06-14	15:31	ROHINI-II 220/66kV 160MVA Tx-I	12-06-14	15:36	TR. TRIPPED ON 86B
70	12-06-14	15:40	ROHINI-II 220/66kV 160MVA Tx-II	12-06-14	16:01	TR. TRIPPED ON 86B
71	12-06-14	15:40	ROHINI-II 220/66kV 160MVA Tx-I	13.06.14	16:36	TR. TRIPPED ON 86A TR. CHARGED ON 16.02HRS BUT 66KV I/C-I DID NOT HOLD
72	12-06-14	15:46	400kV Ballabgarh-Bamnauli Ckt-II	12-06-14	15:54	AT BAMNAULI : CKT. TRIPPED ON C PHASE NUTRAL AUTO TRIP, 186A & B, IDED TRIP
73	12-06-14	16:25	INDRAPRASTHA POWER 220/33kV 100MVA Tx-III	12-06-14	16:55	33KV I/C-III OF 100MVA TR. -III TRIPPED ON O/C, R & B PHASE ALONGWITH BAY NO. 29 (I.G.STADIUM)
74	12-06-14	16:25	INDRAPRASTHA POWER 33kV IG STADIUM CKT-I (BAY-29)	12-06-14	17:04	BAY NO. 29 (I.G.STADIUM) TRIPPED ALONGWITH 33KV I/C-III
75	12-06-14	17:45	NAJAFGARH 66/11kV, 20MVA Tx-I	12-06-14	17:52	TR. TRIPPED ALONGWITH 11KV PUMPING STATION FEEDER TRIPPED ON E/F
76	12-06-14	19:16	220KV BAWANA-DSIIDC BAWANA CKT-I	12-06-14	19:25	AT DSIDC BAWANA : CKT. TRIPPED ON O/C, E/F AT BAWANA : CKT. TRIPPED ON DIST PROT, ABC PHASE, 95 SUPERVISION
77	12-06-14	19:23	ROHINI-II 220/66kV 160MVA Tx-I	12-06-14	19:41	TR. TRIPPED ON 86
78	12-06-14	19:26	220kV BAWANA-DSIIDC BAWANA CKT-I	12-06-14	23:43	AT BAWANA : CKT. TRIPPED ON E/F, TRIP RELAY OPERATED, RED HOT POINT ON LINE ISOLATOR, JAW BROKEN (ISOLATOR), R PHASE AT DSIDC BAWANA : SUPPLY FAIL
79	12-06-14	20:08	ROHINI-II 220/66kV 160MVA Tx-I	12-06-14	22:15	TR. TRIPPED ON 86A, 86B
80	12-06-14	20:08	ROHINI-II 220/66kV 160MVA Tx-II	12-06-14	22:15	TR. TRIPPED ON 86A, 86B
81	12-06-14	23:30	PATPARGANJ 66kV GH-I CKT-I	13-06-14	00:07	CKT. TRIPPED ON VT FUSE FAILURE, Z-1, RYB PHASE,
82	12-06-14	23:30	PATPARGANJ 66kV VIVEK VIHAR CKT-II	13-06-14	00:07	CKT. TRIPPED ON VT FUSE FAILURE, Z-1, 86, 86, DISTANCE 1.6KM
83	12-06-14	23:30	PATPARGANJ 66kV VIVEK VIHAR CKT-I	13-06-14	00:07	CKT. TRIPPED ON VT FUSE FAILURE, Z-1, 86, 86, DISTANCE 1.7KM
84	13-06-14	01:50	WAZIRABAD 220/66kV 100MVA Tx-III	13-06-14	13:21	TR. TRIPPED ON E/F, TRIP PHASE RELAY OPERATED ALONGWITH I/C-III TRIPPED ON 86
85	13-06-14	01:18	220kV WAZIRABAD-GEETA COLONY CKT-II	13-06-14	02:39	AT GEETA COLONY : DIST PROT, O/C, E/F, 93.46% AT WAZIRABAD : ZONE-1, DISTANCE PROT.
86	13-06-14	01:40	220kV GEETA COLONY- PATPARGANJ CKT-I	13-06-14	01:51	AT GEETA COLONY TRIPPED ON SOTF AT PATPARGANJ SUPPLY FAIL
87	13-06-14	01:40	220kV WAZIRABAD-GEETA COLONY CKT-I	13-06-14	01:47	AT GEETA COLONY TRIPPED ON O/C AT WAZIRABAD TRIPPED WITHOUT INDICATION

88	13-06-14	02:33	220KV MAHARANI BAGH - SARITA VIHAR CKT	13-06-14	02:54	AT SARITA VIHAR : DIST PROT, 186X, 186 A&B, ZONE-1, DISTANCE 1.601KM AT MAHARANI BAGH : DIST PROT, AUTO RECLOSE LOCKOUT, 186A,186B, ABC TRIP ZONE-1
89	13-06-14	05:15	NAJAFGARH 66/11kV, 20MVA Tx-III	13-06-14	05:30	TR. TRIPPED ON MASTER RELAY 86, 30D, OLTC, BUCHHLOZ TRIP
90	13-06-14	11:21	ROHINI-II 220/66kV 160MVA Tx-I	13-06-14	11:29	TR. TRIPPED ON 86B, 86A
91	13-06-14	14:17	220KV BAWANA-DSIIDC BAWANA CKT-II	13-06-14	18:31	AT BAWANA : TRIPPED ON DIST PROT OPERATED, A/R, LOCK OUT, ZONE-I, A, BG, ZONE-I, FAULT LOCATION 1.26KMS. AT DSIDC BAWANA : TRIPPED ON MAIN-I, 1/2 DIST PROT, A/R, LOCKOUT, DIST PRO, B PHASE
92	13-06-14	15:20	ROHINI-II 220/66kV 160MVA Tx-I	13-06-14	16:36	TR. TRIPPED ON 86A, 66KV I/C-I TRIPPED ON 86B, PROBLEM OBSERVED IN Y PHASE POLE OF CB
93	14-06-14	04:18	220KV MAHARANIBAGH-MASJID MOTH CKT-I	Contd.		AT MAHARANI BAGH CKT TRIPPED ON DIST PROT,R PHASE, ZONE-1, DIST 3.2KMS AT MASJID MOTH DIST PROT. ZONE-1 TRIED AT MAHARANI BAGH AT 04.47HRS. BUT AGAIN TRIPPED , CABLE OF THE CKT DECLARED FAULTY
94	14-06-14	09:55	NAJAFGARH 66kV PASCHIM VIHAR CKT-II (BODHELA-II CKT-II)	14-06-14	13:40	CKT. TRIPPED ON ZONE-I, B PHASE, DIST PROT, DIST 3.7KMS, 66KV BUS-I Y PHASE CLAMP AND JUMPER BURNT CKT CHARGED ON 66KV BUS-I ALONGWITH 66KV BODELA-I & JAFFARPUR CKT. -I
95	14-06-14	10:03	MUNDKA 220/66kV 160MVA Tx-II	14-06-14	16:12	TR. TRIPPED ON GROUP A, 86, 86A, 86B, 66KV I/C TRIPPED ON 86, HV 86 TRIP
96	14-06-14	10:14	220KVBAWANA- ROHINI CKT-I	14-06-14	11:01	AT BAWANA CKT. TRIPPED ON B PHASE, ZONE-1 AT ROHINI CKT. TRIPPED ON D/P, B & C PHASE, 186A, 186B
97	14-06-14	15:02	220KV GOPALPUR- MANDOLACKT-II	14-06-14	16:37	AT GOPALPUR CKT TRIPPED ON DIST PROT, ZONE-1, DIST 2KMS AT MANDOLA GOPALPUR (NARELA T-OFF) TRIPED ON ZONE-II, DIST PROT
98	14-06-14	15:28	220KV WAZIRABAD-GEETA COLONY CKT-II	14-06-14	15:35	AT WAZIRABAD CKT. TRIPPED ON GENERAL TRIP, RYB PHASE, ZONE I & II AT GEETA COLONY : NO TRIPPING AT GEETA COLONY, HOWEVER BUS COUPLER TRIPPED AT GEETA COLONY
99	14-06-14	15:28	WAZIRABAD 220/66kV 100MVA Tx-III	14-06-14	16:32	TR. TRIPPED ON E/F, ABC PHASE, 86
100	15-06-14	00:13	NAJAFGARH 66/11kV, 20MVA Tx-I	15-06-14	00:26	TR. TRIPPED ON 86 WITH 11KV PUMPING STATION FEEDER TRIPPED ON E/F
101	15-06-14	01:26	NAJAFGARH 66/11kV, 20MVA Tx-I	15-06-14	01:45	TR. TRIPPED ON 86, ALONGWITH 11KV PUMPING STATION FEEDER TRIPPED ON E/F
102	15-06-14	08:00	220KV BAMNAULI-NAJAFGARH CKT-II	15-06-14	08:06	AT NAJAFGARH CKT. TRIPPED ON 186, 186 AT BAMNAULI NO TRIPPING
103	15-06-14	08:00	220KV BAMNAULI-NAJAFGARH CKT-I	15-06-14	08:06	AT NAJAFGARH CKT. TRIPPED ON 186, 186, 95, R&Y PHASE AT BAMNAULI NO TRIPPING
104	15-06-14	15:55	220KV GOPALPUR- MANDOLACKT-II	15-06-14	16:07	AT GOPALPUR CKT. TRIPPED ON 86, CVT AVAILABLE AT GOPALPUR. AT MANDOLA NO TRIPPING.
105	17-06-14	01:35	220 KV PATPARGANJ - I.P. CKT-I	17-06-14	14:00	AT PATPARGANJ CKT. TRIPPED ON DIST PROT. AT I.P. CKT. TRIPPED ON 186, 186X, DIST PROT, ZONE-1, RYB PHASE
106	18-06-14	12:41	DSIIDC Bawana 220/66kV 100MVA Tx-II	18-06-14	12:54	TR. TRIPPED ON MASTER RELAY, 66KV SIDE ON O/C , E/F, 66KV DSIDC -I ALSO TRIPPED ON O/C , E/F TPDDL CHECKED THE LINE AND ENERGIZED AT 16:30HRS. 66KV DISDC -II TRIPPED ON O/C, E/F THE CKT. ENERGIZED AT 13.13HRS.
107	18-06-14	12:41	DSIIDC Bawana 220/66kV 100MVA Tx-III	18-06-14	12:54	TR. TRIPPED ON E/F, 66KV SIDE ON O/C E/F 66KV DSIDC -I ALSO TRIPPED ON O/C , E/F TPDDL CHECKED THE LINE AND ENERGIZED AT 16:30HRS. 66KV DISDC -II TRIPPED ON O/C, E/F THE CKT. ENERGIZED AT 13.13HRS.
108	18-06-14	17:46	220KV BAWANA - KANJHAWALA CKT	18-06-14	18:06	AT BAWANA TRIPPED MANUALLY DUE TO HEAVY SPARKING ON 220KV BUS-II ISOLATORS
109	18-06-14	19:51	220KV PRAGATI - SARITA VIHAR CKT	18-06-14	20:54	AT SARITA VIHAR CKT. TRIPPED ON D/D, AUTO RECLOSE, ABC, ZONE-1, DIST 5.195KMS, 186A, 186B AT PRAGATI CKT. TRIPPED ON ACTIVE GROUP START, ABC, D/P, ZONE-1, LOCATION 4.449KMS.
110	18-06-14	19:56	220KV MAHARANI BAGH - PRAGATI CKT	18-06-14	20:54	AT MAHARANI BAGH CKT. TRIPPED ON ZONE-1, ZONE-2, FAULT LOOP, LOCATION 1.3KM, UNDER VOLTAGE, AT PRAGATI NO TRIPPING ONLY PUT OFF
111	18-06-14	20:06	220KV BAWANA - KANJHAWALA CKT	19-06-14	10:44	AT KHANJAWANA CKT. TRIPPED ON D/P, VT FUSE FAIL, RYB TRIP, CVT AVAILABLE, AS INFORMED BY LINES STAFF AT B PHASE JUMPER SNAPPED AT 14A AT BAWANA NO TRIPPING
112	18-06-14	20:06	220KV KANJHAWALA-NAJAFGARH CKT	19-06-14	10:44	AT NAJAFGARH CKT. TRIPPED ON TRIP ABC, 186, 186, D/P, DISTANCE 5.7KMS. AT KHANJAWALA NO TRIPPING
113	18-06-14	20:06	220KV BAWANA -NAJAFGARH CKT	19-06-14	10:44	AT BAWANA CKT. TRIPPED ON DIST PROT, DISTANCE 16.66KMS, AUXILLARY Z1, R1 & B1 AT NAJAFGARH NO TRIPPING
114	19-06-14	19:55	220KV BAMNAULI-NAJAFGARH CKT-I	19-06-14	19:58	AT NAJAFGARH CKT. TRIPPED ON 186 MASTER RELAY AT BAMNAULI NO TRIPPING
115	20-06-14	07:20	LODHI RD 33/11kV, 20MVA Tx-II	20-06-14	07:25	TR. TRIPPED ON O/C, 51AX, DUE TO BIRDAGE

116	20-06-14	07:20	LODHI RD 220/33kV 100MVA Tx-II	20-06-14	07:25	TR. TRIPPED ON TRIP RELAY, 86, GROUP A, O/C, 67A ALONGWITH 33KV I/C-II TRIPPED ON O/C R PHASE
117	21-06-14	14:36	220kV BAMNAULI-PAPPANKALAN-II CKT-II	21-06-14	14:39	AT BAMNAULI CKT. TRIPPED ON 186AB, BACKUP TRIP, 86BV, 67 B PHASE, O/C AT PAPANALAN-II ONLY SUPPLY FAIL
118	21-06-14	15:54	220kV GOPALPUR- MANDOLACKT-I	21-06-14	19:05	AT GOPALPUR CKT. TRIPPED ON M1 TRIP, R&B PHASE, M-2, R& B PHASE, ZONE-1, DISTANCE 5.0KM, GENERAL TRIP R&Y AT MANDOLA CKT. TRIPPED ON Y PHSE, ZONE-2, DISTANCE 5.6KM, DISTANCE PROT, DISTANCE 20.19KMS
119	22-06-14	12:45	PATPARGANJ 220/66kV 100MVA Tx-I	22-06-14	15:05	66KV I/C MADE OFF FOR SAFETY REASONS AS DUE TO BIRDAGE NEAR 66KV BUS COUPLER SPARKING OCCURED
120	22-06-14	12:45	PATPARGANJ 220/66kV 100MVA Tx-II	22-06-14	15:05	6KV I/C MADE OFF FOR SAFETY REASONS AS DUE TO BIRDAGE NEAR 66KV BUS COUPLER SPARKING OCCURED
121	22-06-14	18:50	220kV BAMNAULI-NAJAFGARH CKT-I	22-06-14	19:21	AT NAJAFGARH CKT. TRIPPED ON 186, CVT AVAILABLE AT BAMNAULI NO TRIPPING
122	23-06-14	01:25	220kV PRAGATI - I.P. CKT - II	23-06-14	15:22	AT I.P. CKT. TRIPPED ON DIRECTIONAL E/F, 86 AT PRAGATI NO TRIPPING, SMOKE OBSERVED ON R PHASE CT.
123	23-06-14	13:38	220kV GAZIPUR - BTPS CKT	23-06-14	14:52	AT GAZIPUR CKT. TRIPPED ON ZONE-1, DIST PROT AT BTPS R PHASE, E/F, ZONE-1, DISTANCE 14.3KMS
124	23-06-14	13:50	WAZIRABAD 66/11kV, 20MVA Tx-III	23-06-14	14:00	TR. TRIPPED ON HIGH WINDING TEMP ALONGWITH 11KV I/C-III
125	23-06-14	13:50	WAZIRABAD 220/66kV 100MVA Tx-II	23-06-14	14:00	TR. TRIPPED ON SPR
126	23-06-14	14:29	400kV Mundka-Jhatikara Ckt-I	23-06-14	19:08	SHUTDOWN TO ATTEND HEAVY SPARKING AT B PHASE LINE ISOLATOR CLAMP
127	24-06-14	19:18	220KV WAZIRABAD - MANDOLA CKT-II	24-06-14	19:28	AT WAZIRABAD : CKT. TRIPPED ON GEN. TRIP, RYB PHASE, STARTT Y PHASE, ZONE-1, DISTANCE PROT, DIST. 2.5KMS. AT MANDOLA : CKT. TRIPPED ON DIST PROT, DIST 9.5KMS
128	25-06-14	04:58	220kV GOPALPUR- MANDOLACKT-I	25-06-14	06:01	AT GOPALPUR CKT. TRIPPED ON DIST PROT, ZONE-1, DISTANCE 5.9KM AT MANDOLA CKT. TRIPPED ON DIST PROT,
129	25-06-14	04:59	220kV WAZIRABAD-GEETA COLONY CKT-I	25-06-14	05:18	AT WAZIRABAD : CKT. TRIPPED ON GEN. TRIP, RYB PHASE, START B PHASE, ZONE-1, ZONE-2, ZONE-3, DISTANCE 0KMS. AT GEETA COLONY : CKT. TRIPPED ON O/C, E/F, START Z>1, START 5.81KM
130	25-06-14	04:59	220kV WAZIRABAD-GEETA COLONY CKT-II	25-06-14	05:18	AT WAZIRABAD : CKT. TRIPPED ON GEN TRIP, START R PHASE, DISTANCE 0KM AT GEETA COLONY CKT. TRIPPED ON O/C, E/F, START 5.81KMS.
131	25-06-14	04:59	WAZIRABAD 220/66kV 100MVA Tx-III	25-06-14	05:13	TR. TRIPPED ON E/F & 66KV I/C-III TRIPPED ON INTER TRIP
132	25-06-14	05:23	220kV GEETA COLONY- PATPARGANJ CKT-I	25-06-14	05:31	AT GEETA COLONY CKT. TRIPPED ON ZONE-1, DISTANCE 1.1KM AT PATPARGANJ NO TRIPPING
133	25-06-14	05:40	NAJAFGARH 66/11kV, 20MVA Tx-II	25-06-14	06:55	11KV I/C-II TRIPPED ON E/F
134	25-06-14	14:46	PRAGATI 220/66kV 160MVA Tx-II	25-06-14	14:59	TR. TRIPPED ON BUCHHOLZ, OLTC, 30B, 30C
135	25-06-14	14:46	PRAGATI 220/66kV 160MVA Tx-I	25-06-14	14:57	TR. TRIPPED ON BUCHHOLZ, 86, 86, 30B, 30C
136	25-06-14	15:03	NARAINA 33kV 10MVAR CAP. BANK-II	26-06-14	13:10	CAPACITOR BANK TRIPPED ON 86, NEUTRAL IMPEDANCE
137	25-06-14	22:40	220kV GOPALPUR- MANDOLACKT-I	26-06-14	15:27	AT GOPALPUR CKT. TRIPPED ON M1 RYB PHASE, M2 R&Y PHASE, ZONE-1, DIST. PROT., DISTANCE 12.1KM AT MANDOLA ZONE-1, B&N PHASE, DISTANCE 12.1KM
138	27-06-14	18:30	220kV ROHINI-SHALIMARBAGH CKT-II	27-06-14	19:30	AT SHALIMARBAGH CKT. TRIPPED ON POLE DISCREPANCY AT ROHINI NO TRIPPING
139	29-06-14	10:55	220kV MEHRAULI - VASANT KUNJ CKT.-I	29-06-14	12:27	AT MEHRAULI CKT. TRIPPED ON DIST PROT, B PHASE, 186A&B AT VASANT KUNJ ONLY SUPPLY FAIL
140	29-06-14	14:27	220kV WAZIRABAD - KASHMERE GATE CKT-II	29-06-14	16:55	AT WAZIRABAD : CKT. TRIPPED ON DIST PROT, ZONE-1, DISTANCE 1.3KM, R,Y PHSE, 86 AT KASHMIRI GATE ONLY SUPPLY FAIL
141	30-06-14	12:14	ELECTRIC LANE 220/33kV 100MVA Tx-I	30-06-14	12:51	TR. TRIPPED ON 86A, & 86B RELAY

20 DETAILS OF UNDER FREQUENCY RELAY OPERATIONS IN DELHI POWER SYSTEM DURING THE MONTH OF JUNE 2014

DATE	S. N.	TIME		Name of Grid	NAME OF AFFECTED FEEDERS	MODE	LOAD RELIEF IN MW
		OUT	IN				
12.06.14	1	14.27	14.37	220kV Okhla	33kV Balaji Ckt. I	Df/dt Mode	14
	2	14.27	14.37	220kV Okhla	33kV Balaji Ckt. -II	Df/dt Mode	12